

Community-led approaches to building resilience



The policy gaps and opportunities

Dr Anne Cleary



Acknowledgement of Country

Mosaic Insights recognises and acknowledges the unique relationship and deep connection to Country shared by Aboriginal and Torres Strait Islander people, as First Peoples and Traditional Owners of Australia. We pay our respects to their Cultures, Country and Elders past and present.

Artwork by Melissa Barton. This piece was commissioned by Alluvium and tells our story of caring for Country, through different forms of waterbodies, from creeklines to coastlines. The artwork depicts people linked by journey lines, sharing stories, understanding and learning to care for country and the waterways within.

NOW MORE THAN EVER

NATIONAL RECONCILIATION WEEK 2024

27 MAY – 3 JUNE

#NRW2024 RECONCILIATION.ORG.AU



National Reconciliation Week (NRW) is a time for all Australians to learn about our shared histories, cultures, and achievements, and to explore how each of us can contribute to achieving reconciliation in Australia.

The National Reconciliation Week theme for 2024, Now More Than Ever, is a reminder to all of us that no matter what, the fight for justice and the rights of Aboriginal and Torres Strait Islander people will –and must –continue.

About Mosaic Insights

We are a strategy, planning and design practice.

We exist to accelerate the transition to a future of resilient, healthy communities with nature at their heart.

We apply an integrated, evidence-based approach to analyse, plan and design the social landscapes of the future.



alluvium

Science, engineering and strategy for catchments, rivers and coasts



Ecological strategy, advice and design in a changing environment



Science, insights and impact for social landscapes of the future

Alluvium Group

Solving the complex and systematic challenges facing our society and environment



Catchment management science and planning through the Asia Pacific region and beyond



Natural Capital Economics

Economic and policy analysis, advice and decision support



Setting the Scene

Navigating the policy response - three take aways:

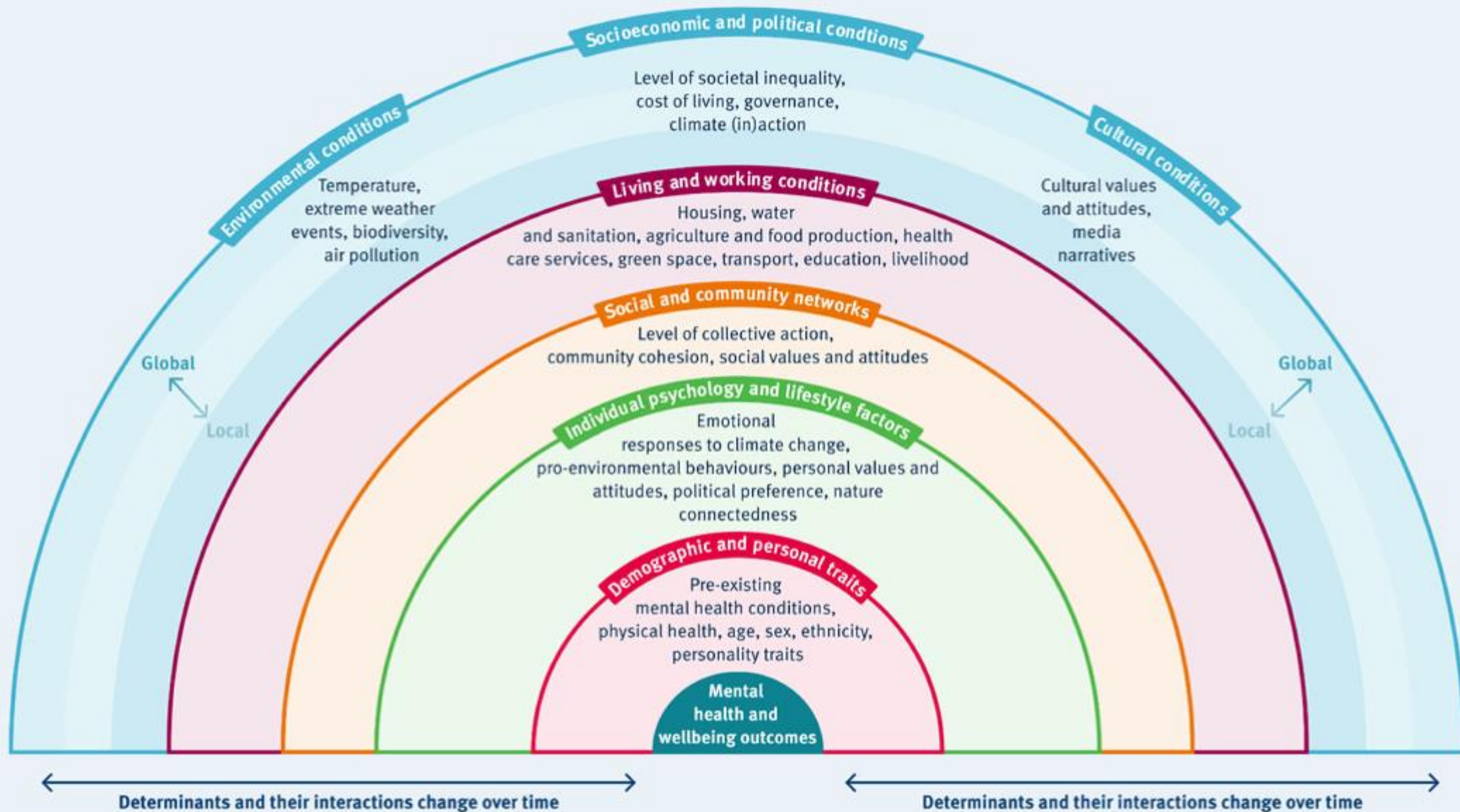
- Systems Thinking
- Integrated
- Evidence Informed and Community Led

Systems Thinking



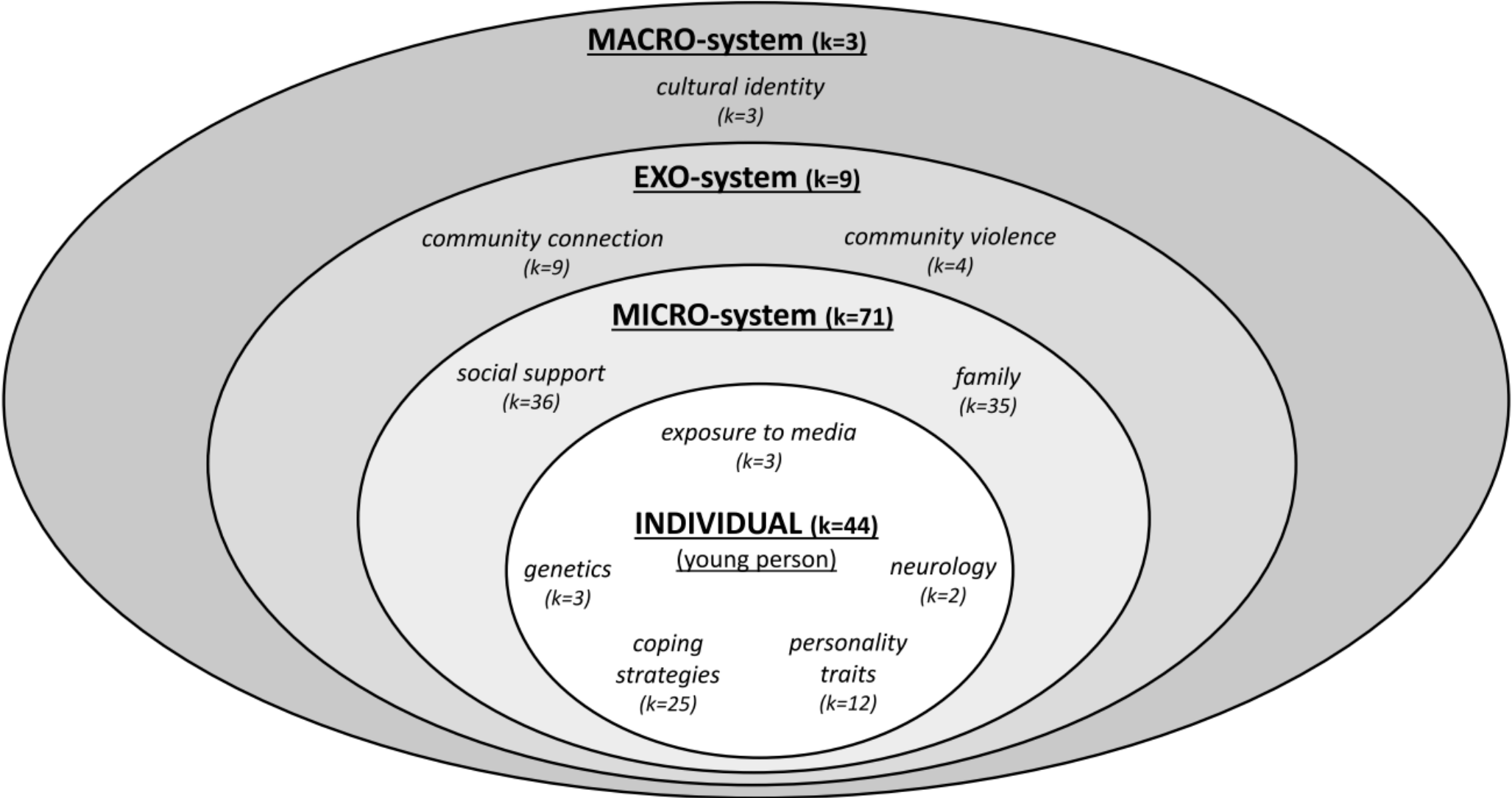
Determinants of mental health and wellbeing in the context of climate change

Lawrance, Emma L., et al. "The impact of climate change on mental health and emotional wellbeing: a narrative review of current evidence, and its implications." *International Review of Psychiatry* 34.5 (2022): 443-498.



Risk and Protective factors of mental health in the context of climate change

Ma, Tianyi, Jane Moore, and Anne Cleary. "Climate change impacts on the mental health and wellbeing of young people: A scoping review of risk and protective factors." *Social Science & Medicine* 301 (2022): 114888



Integrated Policy

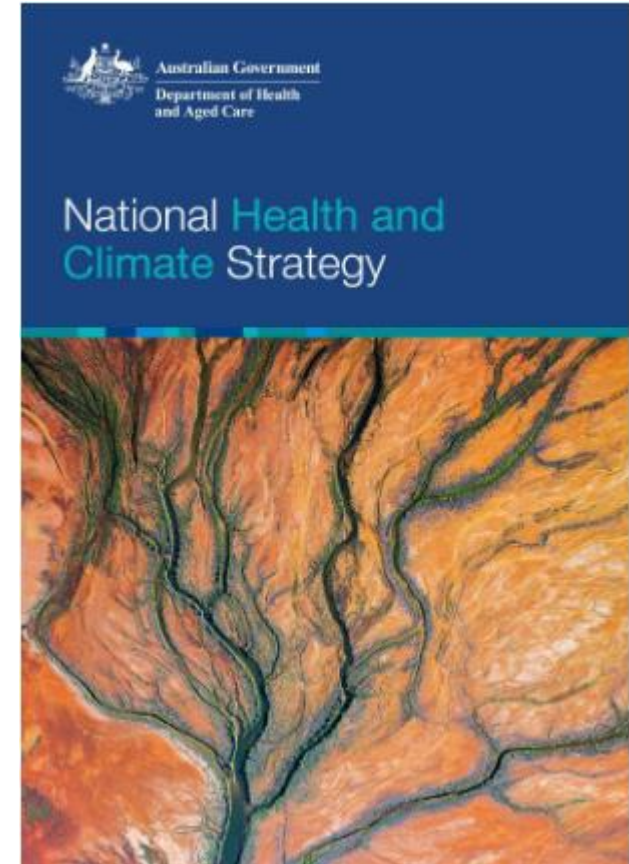
- Across policy sectors
- Across policy tiers (collaborative governance)
- Across policy cycle



Integration across policy sectors

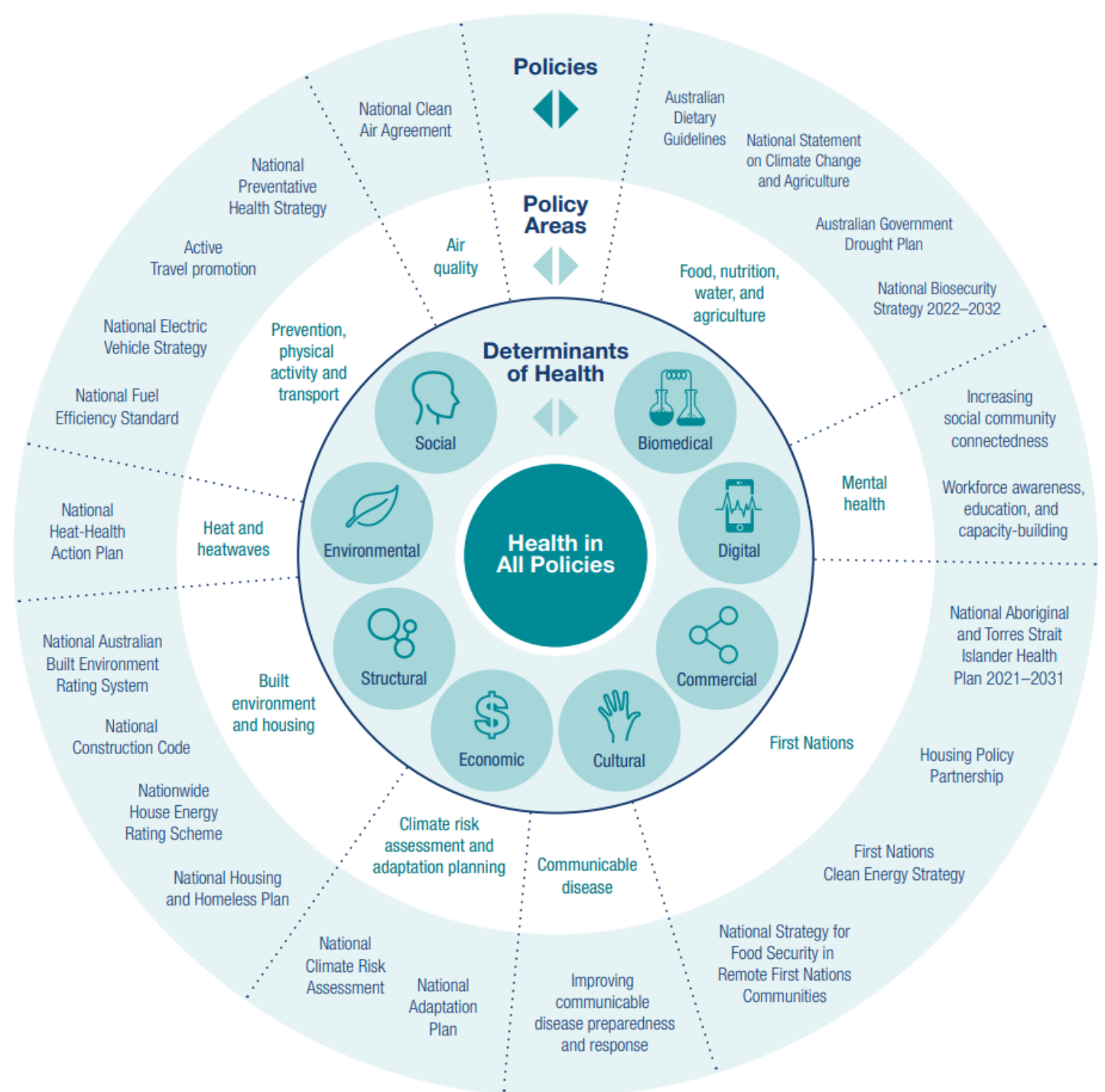
National Health and Climate Strategy (2023)

Australia's first National Health and Climate Strategy sets out a whole of-government plan for addressing the health and wellbeing impacts of climate change, whilst also addressing the contribution of the health system - encompassing public and preventive health, primary and secondary health care, and aged care - to climate change.



Health in All Policies

Objective 4 (Health in all policies) is to support healthy, climate-resilient and sustainable communities through whole-of-government action which recognises the relationship between health and climate outcomes



Integration across policy tiers - collaborative governance

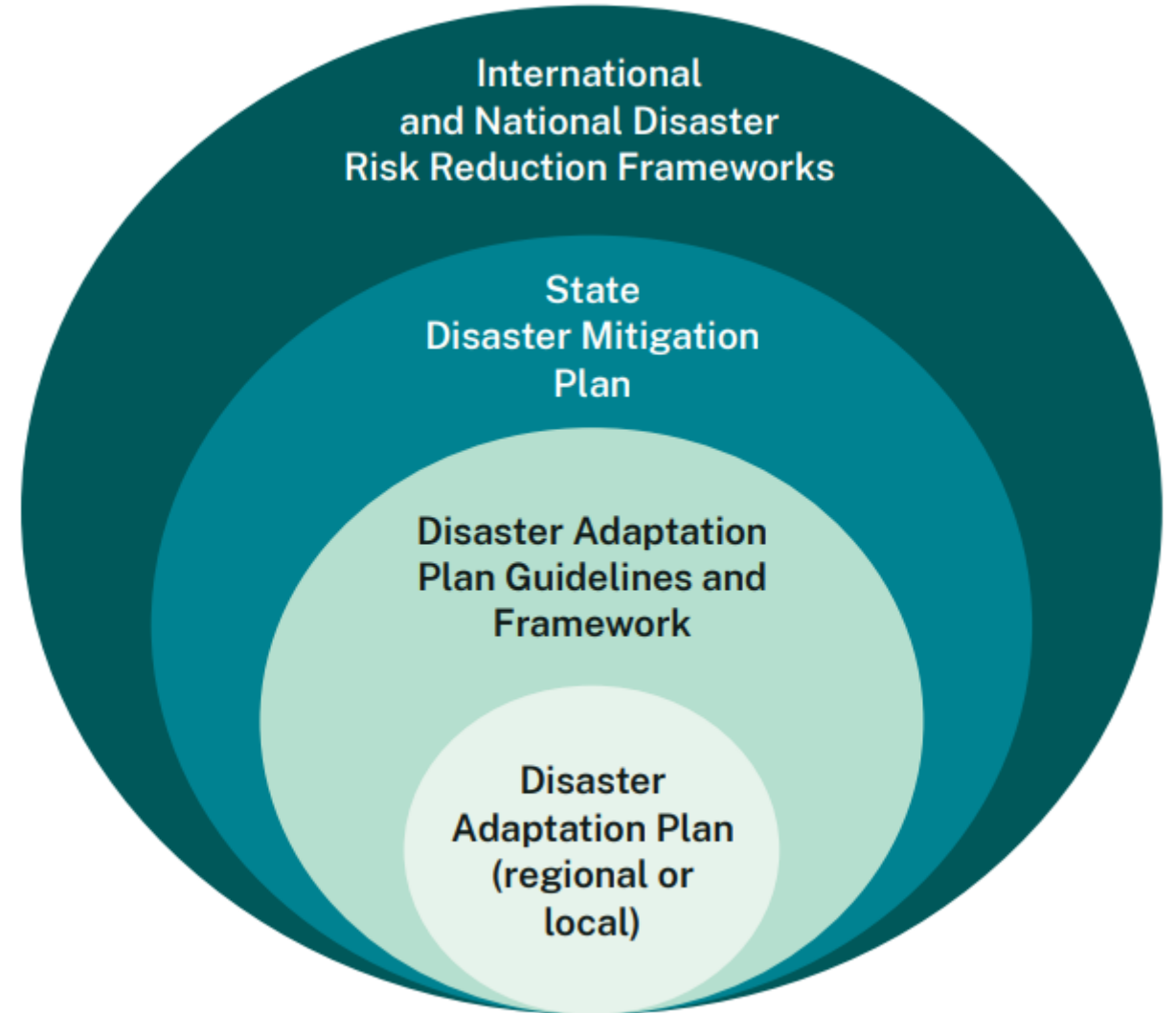
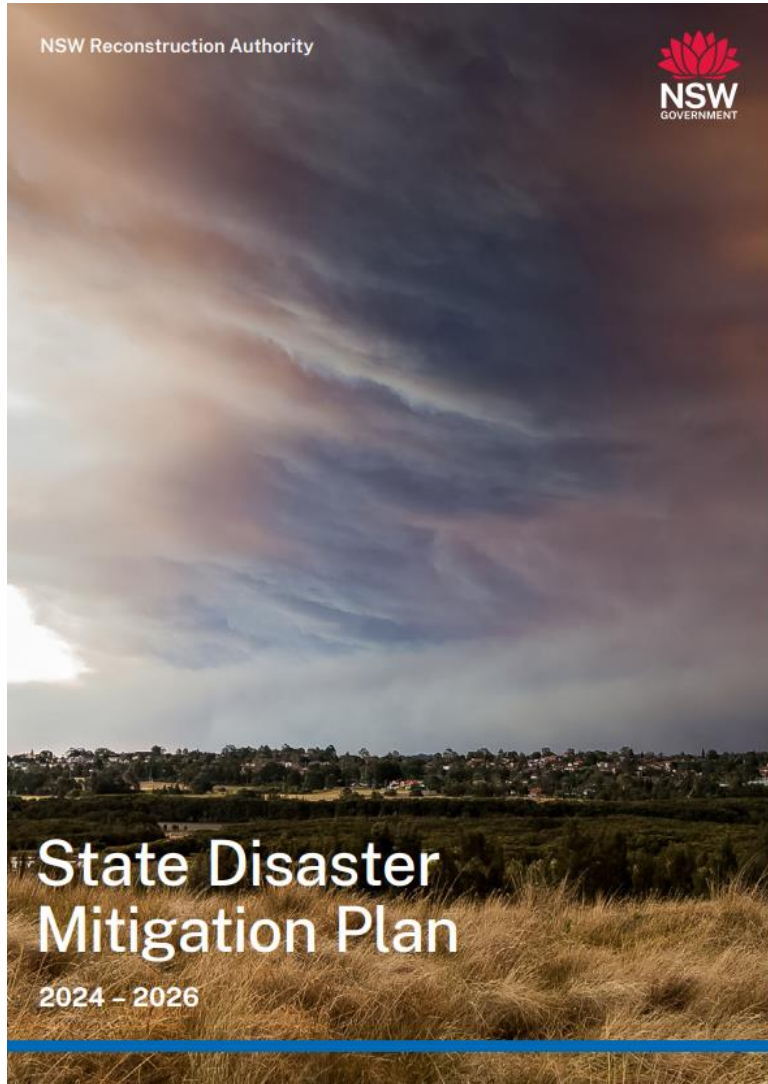



Figure 42. Hierarchy of plans



Wisemans Ferry Community Resilience Plan

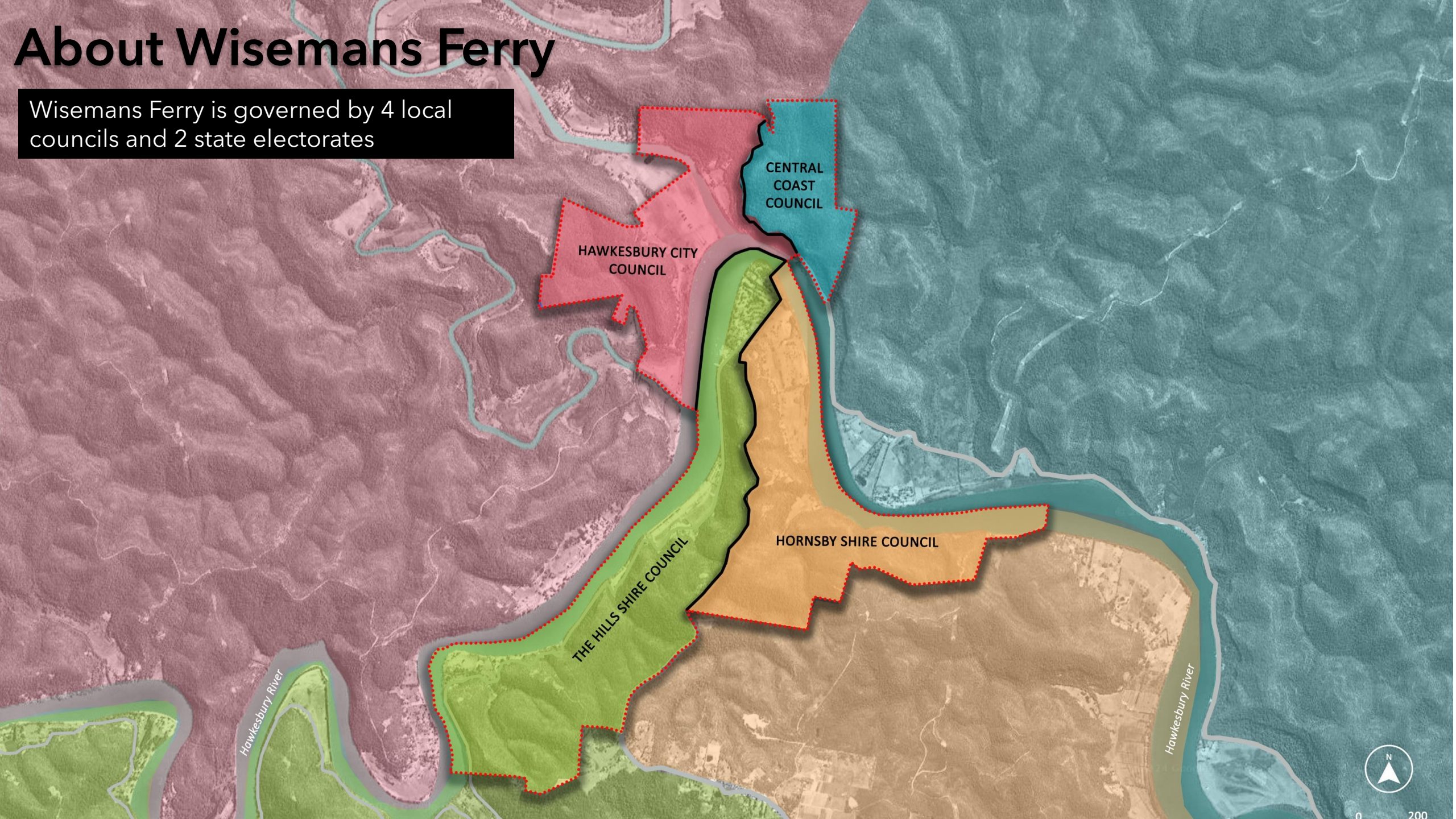
April 2024



Event	Wisemans Ferry (Webbs Creek) Flood Level (m AHD)
Jun 1867	9.1
May 1889	7.3
Jun 1949	5.6
Nov 1961	3.95
Jun 1964	4.2
Mar 1978	4.8
Apr 1988	2.84
Aug 1990	4.3
Feb 2020	2.39
Mar 2021	4.36
Mar 2022	5.18
Apr 2022	1.64
Jul 2022	5.78
Oct 2022	2.08

About Wisemans Ferry

Wisemans Ferry is governed by 4 local councils and 2 state electorates



CENTRAL
COAST
COUNCIL

HAWKESBURY CITY
COUNCIL

THE HILLS SHIRE
COUNCIL

HORNSBY SHIRE
COUNCIL

Hawkesbury River

Hawkesbury River



0 200

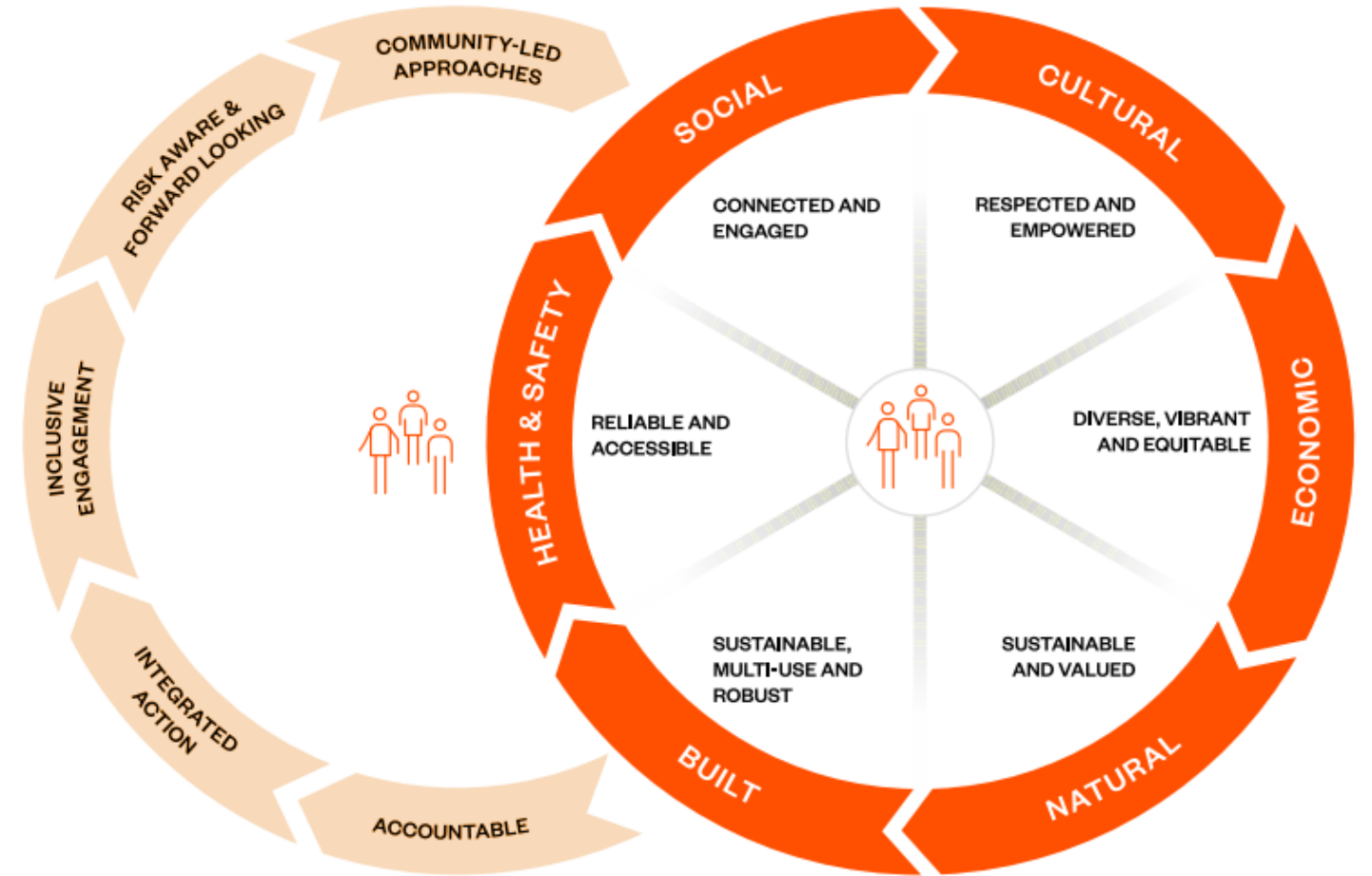


RESILIENT COMMUNITIES FRAMEWORK

Version 1.0
June 2022

Principles

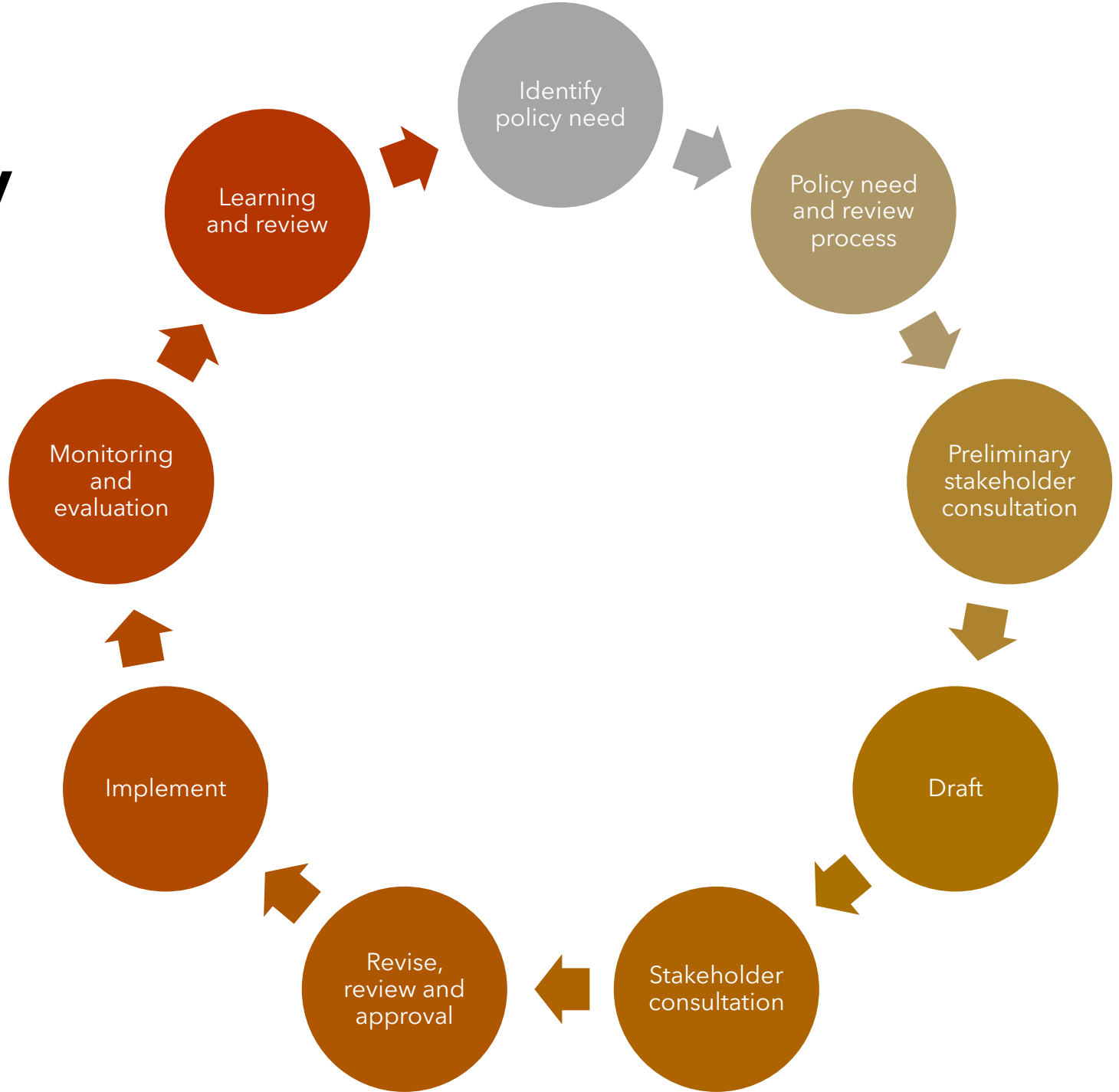
Environments



Challenges with collaborative governance

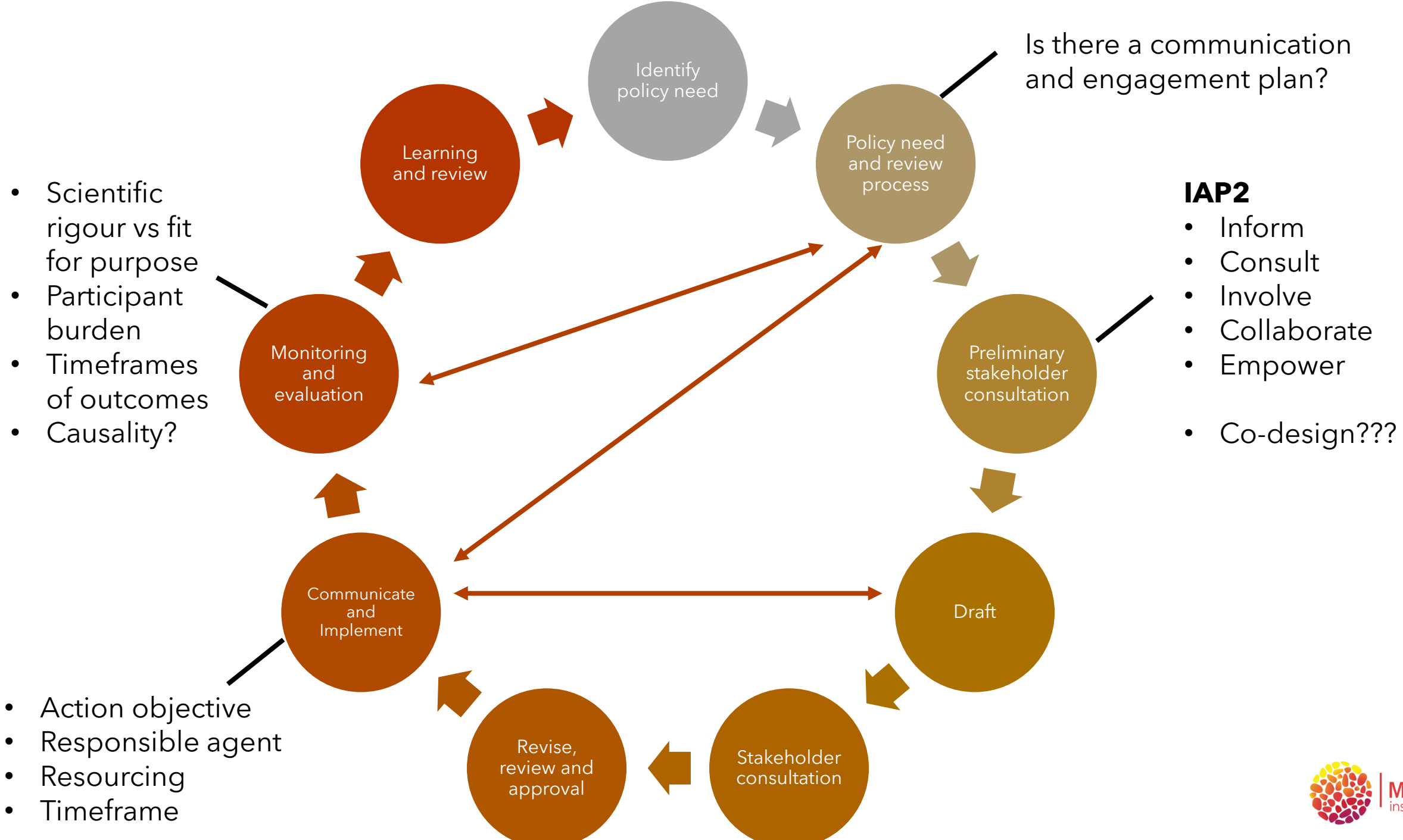
- **No one size fits all** - need to identify the collaborative governance mechanisms required to enable place-based and community-oriented collaboration to occur.
- **Needs sustainable funding models/mechanisms** - financing of co-governance is a challenge. However, evidence suggests that co-creation/co-design processes that foster a long-term sense of ownership are an effective way of developing sustainable financing and operating models
- **Needs time and resources** - authentic collaboration is resource and time intense and requires long term outcomes
- **Risk** - need for experimentation, permission to fail and handling of power dynamics
- **Need implementation and outcome** - need to keep momentum and demonstrate impact

Integration across policy cycle



Evidence informed and community led



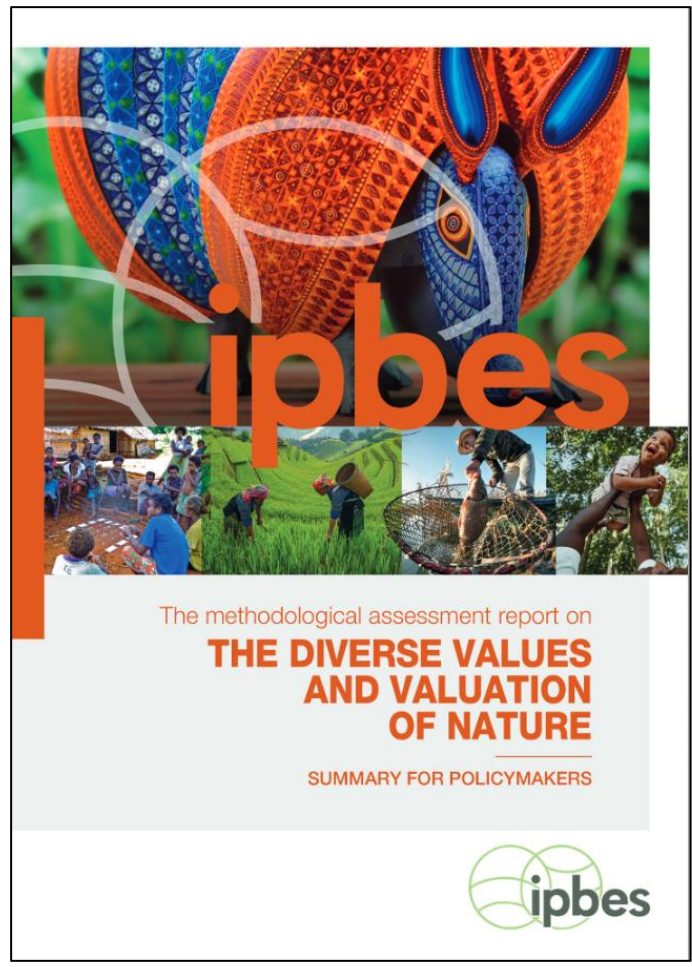
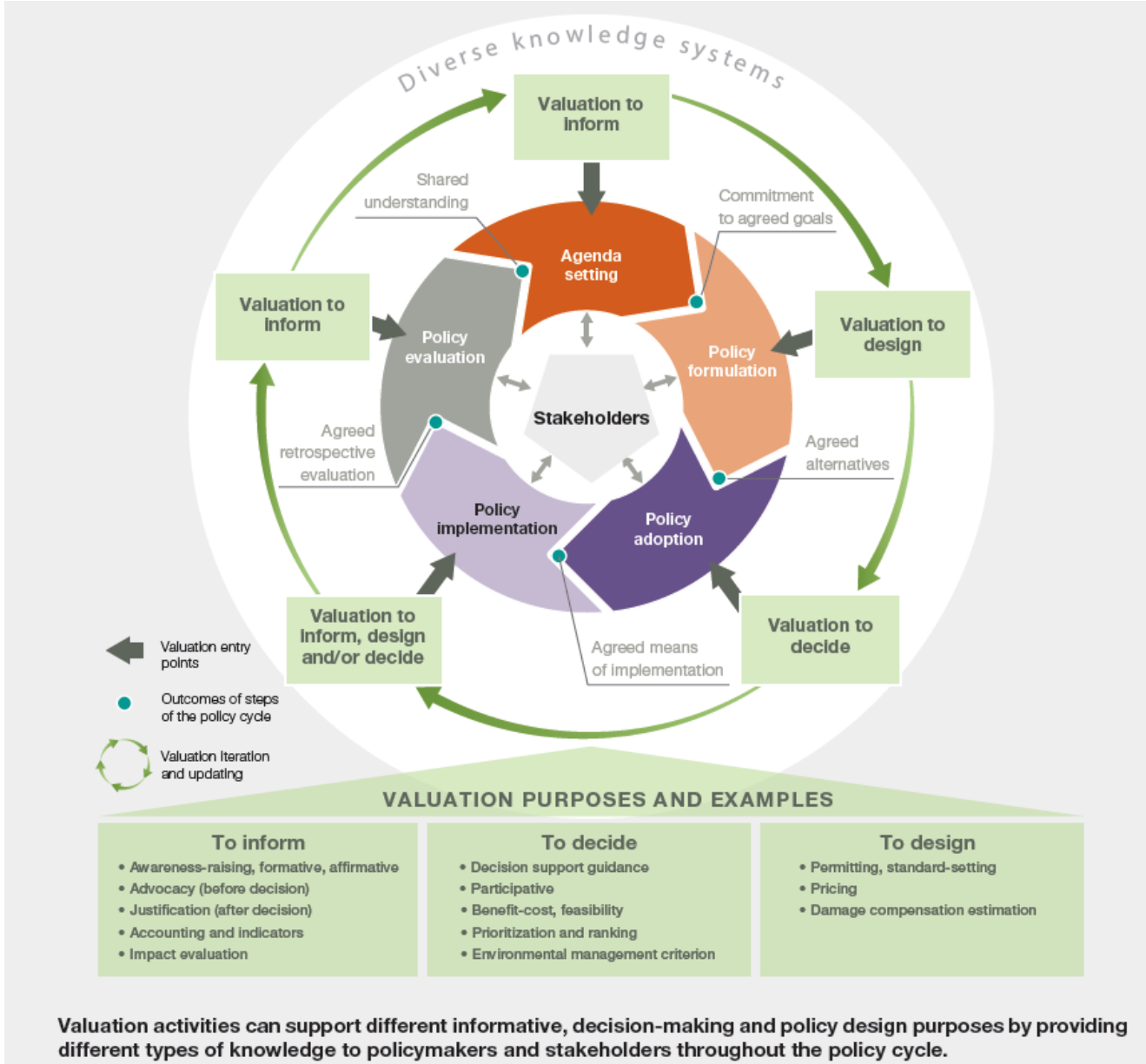


- Scientific rigour vs fit for purpose
- Participant burden
- Timeframes of outcomes
- Causality?

- IAP2**
- Inform
 - Consult
 - Involve
 - Collaborate
 - Empower
 - Co-design???

- Action objective
- Responsible agent
- Resourcing
- Timeframe

Starting to see this thinking reflected in latest international frameworks





Recap:

We need **evidence informed and community led/owned** policy that is **integrated** across sectors, government tiers and the policy cycle and that reflects a **systems thinking approach**.

Thank you

Anne.cleary@mosaicinsights.com.au



MOSAIC
insights