

# The Rights of Persons with Disabilities in Climate Adaptation Policies

**Prof. Sébastien Jodoin**

Canada Research Chair in Human Rights, Health,  
and the Environment

McGill University Faculty of Law



# 1. Brief Introduction to the Field of Climate Adaptation

# Concept of Climate Adaptation

process of adjustment to actual or expected climate change and its effects

# Concept of Climate Adaptation

process of adjustment to actual or expected climate change and its effects

goal is to moderate or avoid harm or exploit opportunities

# Concept of Climate Adaptation

process of adjustment to actual or expected climate change and its effects

goal is to moderate or avoid harm or exploit opportunities

long-term planning based on climate risk models and projections (and involving multiple stakeholders)

# Types of Climate Risks

Rapid-onset/extreme, e.g.  
*cyclones, floods & heatwaves*

Slow-onset/gradual, e.g. *sea level rise, droughts & invasive species*

# Types of Climate Risks

Rapid-onset/extreme, e.g. *cyclones, floods & heatwaves*

Slow-onset/gradual, e.g. *sea level rise, droughts & invasive species*

Direct, e.g. *geophysical and health impacts*

Indirect, e.g. *climate migration; water conflicts*

2. Why are people with disabilities disproportionately affected by climate impacts?



British Columbia

# Hundreds died during B.C.'s heat dome. Who is responsible for deaths caused by extreme heat?



The background image shows a multi-story brick building with many windows. A sign on the left side of the building reads "EMERGENCY". In the foreground, a person is lying on a yellow stretcher on a paved surface. The legs and feet of another person, wearing dark pants and shoes, are visible next to the stretcher. The scene appears to be outdoors, possibly on a street or sidewalk.

91% of the victims had a disability

(schizophrenia, substance use disorder, epilepsy, chronic obstructive pulmonary disease, depression, asthma, mood and anxiety disorders, and diabetes)

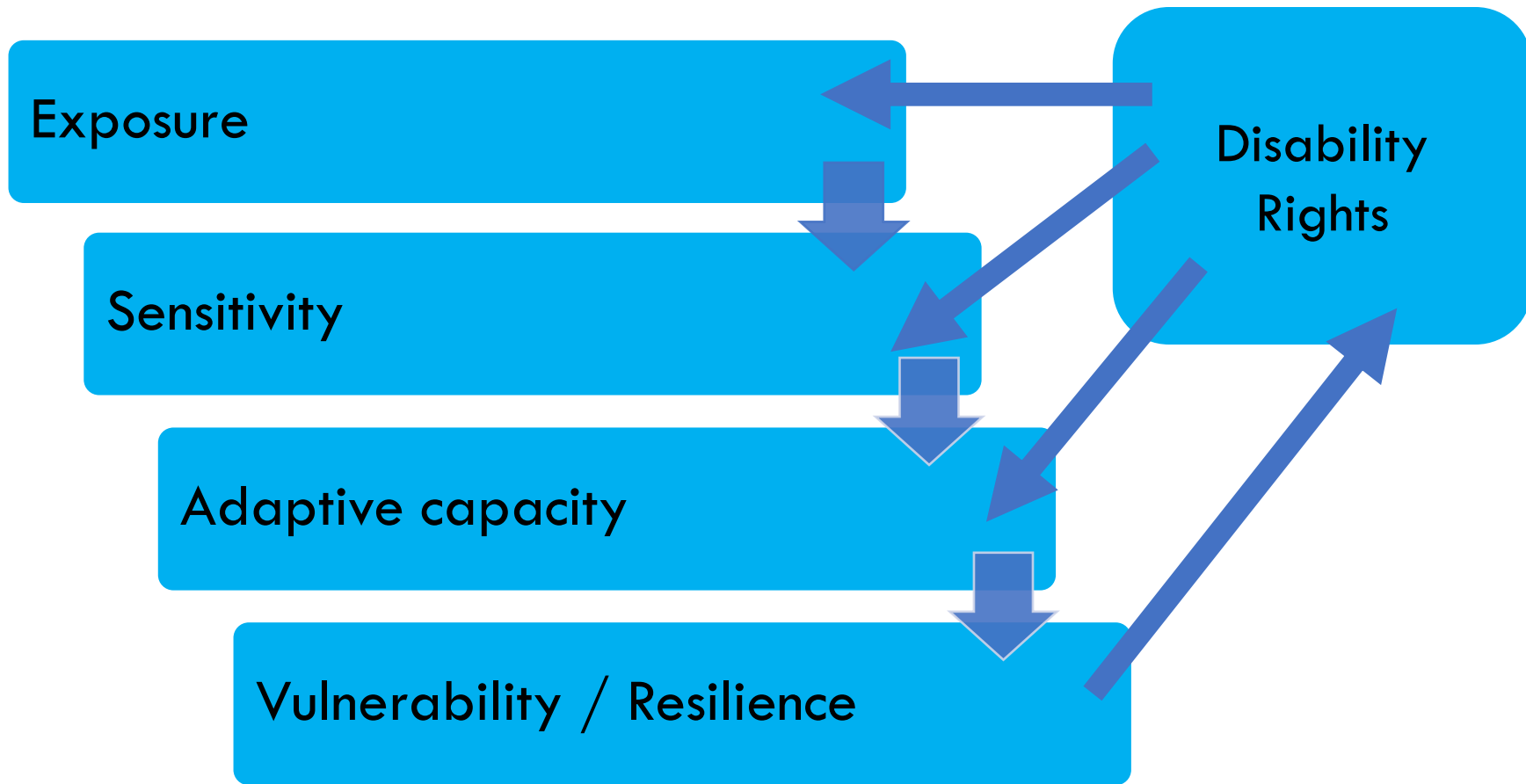
Exposure

```
graph TD; A[Exposure] --> B[Sensitivity]; B --> C[Adaptive capacity]; C --> D[Vulnerability / Resilience]
```


Sensitivity

Adaptive capacity


Vulnerability / Resilience



**3. Are people with disabilities and their rights included in global climate adaptation policies?**

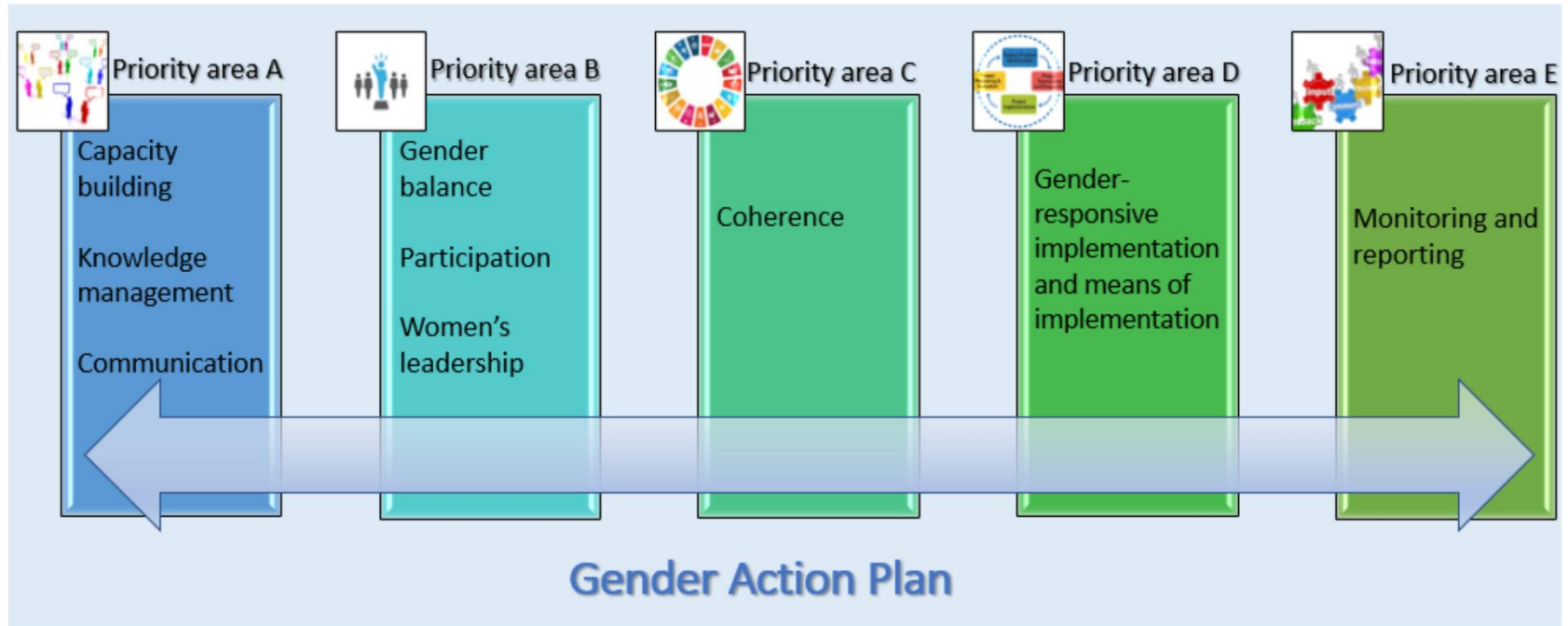


16 references to people with disabilities in the multilateral climate regime (1992-2022)

A large, modern conference room with a circular table and many people seated around it. The room has large windows on the left side, and a large white screen is visible in the background. A blue text overlay is centered on the image.

Most references to disability are vague  
and there is only one concrete measure  
for disability inclusion

# Persons with disabilities need a dedicated action plan





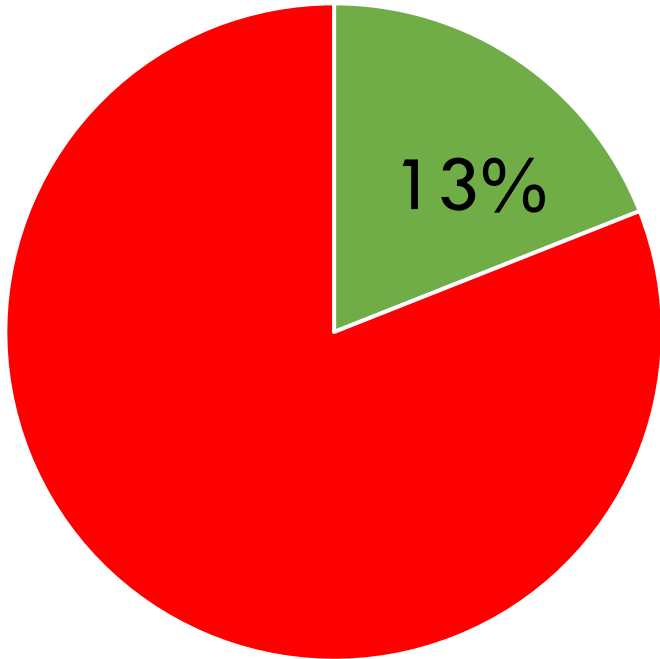
3. Are people with disabilities and their rights included in domestic climate adaptation policies?



# **DISABILITY RIGHTS IN NATIONAL CLIMATE POLICIES**

Status Report  
November 2022

# References to Disability in Nationally Determined Contributions



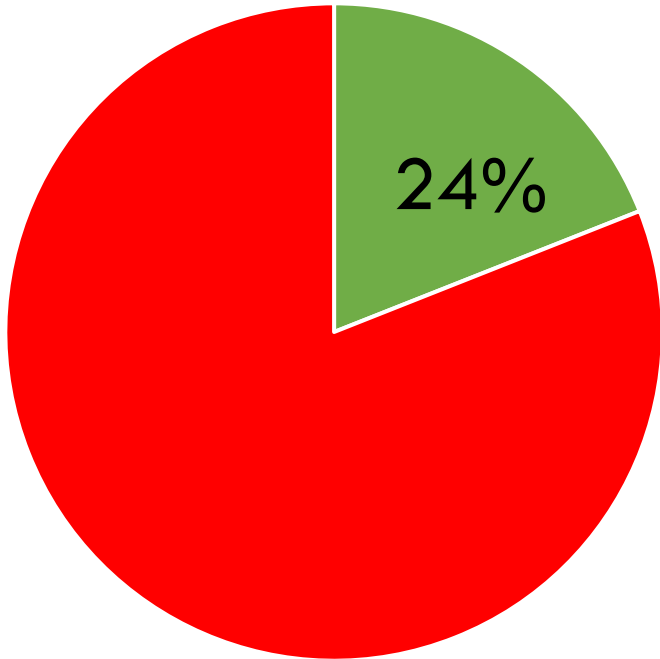
Only 26 parties to the *Paris Agreement* mention disability in the adaptation section of their NDCs

Most references to disability in NDCs  
are vague



# **Vanuatu's Revised and Enhanced 1<sup>ST</sup> Nationally Determined Contribution 2021–2030**

# References to Disability in Key Adaptation Policies



Only 46 parties to the *Paris Agreement* mention disability in their adaptation policies

Only 15 policies include concrete measures to enhance the climate resilience of people with disabilities

# Disability Rights in Adaptation Policies

Concrete Measures for Disability Inclusion

15

References to Disability Rights

2

Recognition of the Knowledge of People with Disabilities

2

Recognition of the Participation of People with Disabilities

14

Evidence of the Involvement of People with Disabilities in  
Adaptation Policy Development

1







[www.disabilityinclusiveclimate.org](http://www.disabilityinclusiveclimate.org)