

Living Arrangements and Intergenerational Networks of Older Malaysians: An Exploratory Analysis

Tengku Aizan HAMID, PhD

Public Interest Director,
Board of Directors of the Private Pension Administrator (PPA)

Retired Founding Director,
Malaysian Research Institute on Ageing,
Universiti Putra Malaysia

Executive Committee Member,
Gerontological Association of Malaysia

Content

1. Population ageing
2. Living arrangement
3. Social Network
4. Intergenerational solidarity

Distribution of Older Persons by Sex & Ethnicity, Malaysia, 2020

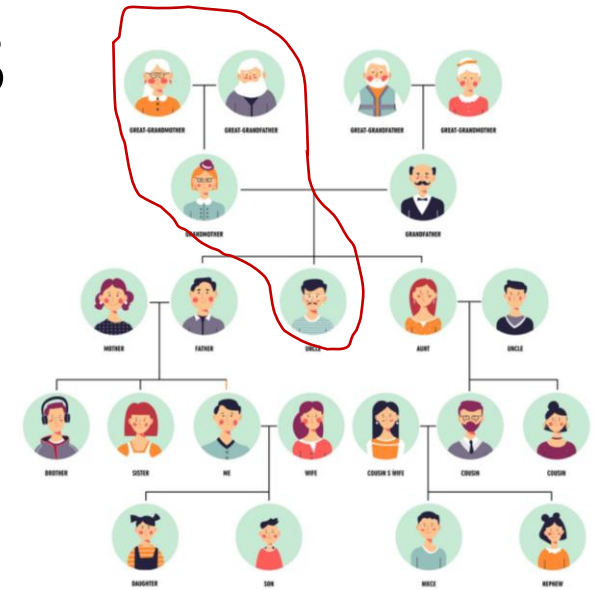
Ethnicity	Total		Male		Female	
	N ₆₀₊	% ₆₀₊	N ₆₀₊	% ₆₀₊	N ₆₀₊	% ₆₀₊
Malaysian	3,194.1	10.7	1,560.0	10.3	1,634.2	11.1
Malay & Bumiputera	1,998.5	9.7	972.4	9.3	1,026.2	10.1
Chinese	949.4	13.8	472.0	13.4	477.5	14.1
Indian	225.6	11.3	105.2	10.4	120.6	12.2
Others	20.6	9.6	10.4	8.9	10.1	10.2
Non-Malaysian	149.3	5.5	83.6	4.5	65.7	8.0
Total	3,343.3	10.3	1,643.6	9.7	1,699.7	11.0

Source: Current Population Estimates, Malaysia, 2022 (DOSM, 2022)



Deconstructing Living Arrangements

- One of the major limitations of research is that we usually study family households and not the actual family across different households
- In addition, our convention of using head of household as the reference person basically omits the richer data of relationships among all the household members



Relationship to Head of Household

Hh Members	Individual A
G1 - Individual A	Self
G1 - Individual B	Spouse
G2 - Individual C	Child
G3 - Individual D	Grandchild
G0 - Individual E	Parent

Interrelationship Matrix

Hh Members	A	B	C	D	E
Individual A	Self	Sp	Parent	GFath	Child
Individual B	Sp	Self	Parent	Gmot	Dg-il
Individual C	Child	Child	Self	Mot	GChild
Individual D	GChild	GChild	Child	Self	GGC
Individual E	Parent	Mot-il	GMot	GGM	Self

Household Composition, Malaysia, 1999 - 2019

Household Composition	1999			2009			2019		
	n	%	Hh Size	n	%	Hh Size	n	%	Hh Size
<i>One-person Households</i>									
Non-older Person Living Alone	259	9.4	1.0	436	6.7	1.0	809	4.9	1.0
Older Person (60+) Living Alone	77	2.8	1.0	159	2.4	1.0	540	3.3	1.0
<i>Multi-person Households</i>									
Households without Older Person	1,861	67.4	4.8	4,350	67.0	4.6	9,530	58.3	4.3
Households with Older Person & Non-older Person	516	18.7	4.9	1,373	21.1	4.7	4,678	28.6	4.4
Households with only Older Person	48	1.7	2.0	177	2.7	2.0	797	4.9	2.0
Total Sampled Households	2,761	100.0	4.3	6,495	100.0	4.2	16,354	100.0	3.9

Source: Authors' Tabulation, Household Expenditure Survey 30% Microdata (DOSM, 2012; 2020)



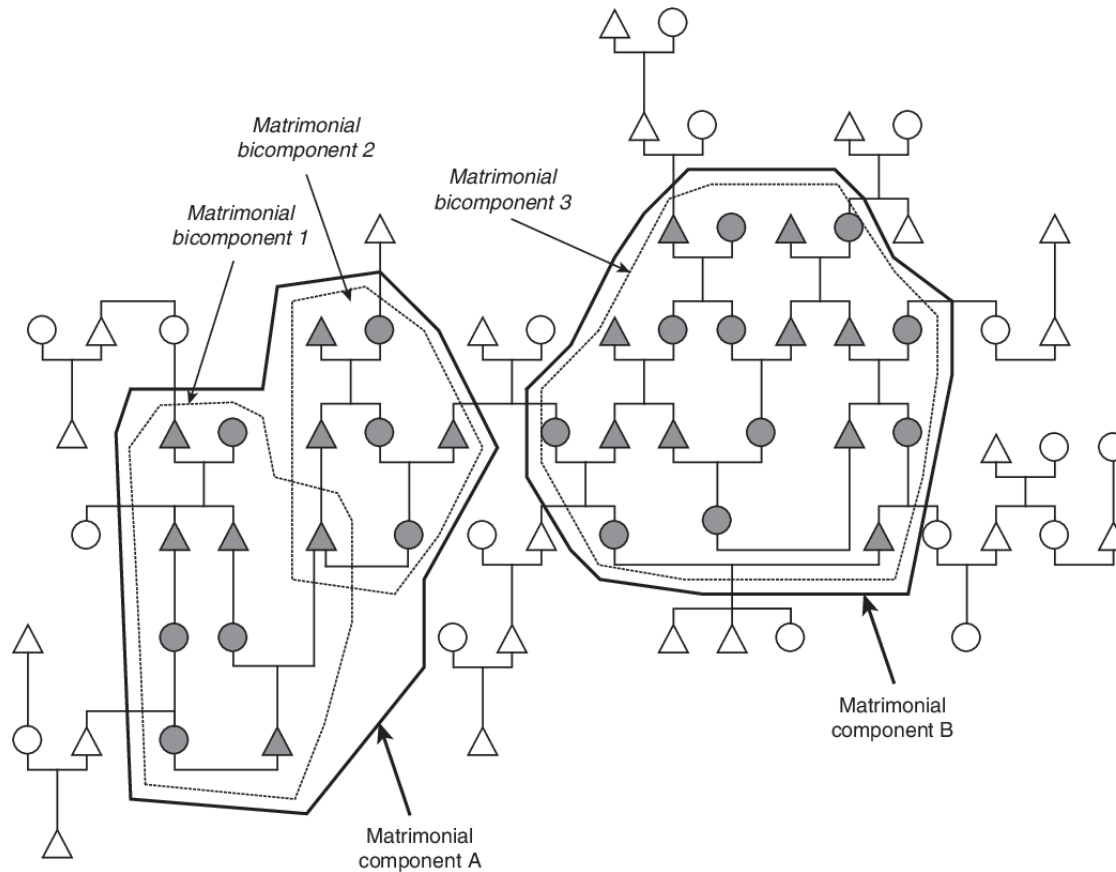
Living Arrangements of Older Persons, Malaysia, 2019

Living Arrangements	Total Households		Older Households		Older Persons (60+)					
					Total ₆₀₊		Male ₆₀₊		Female ₆₀₊	
	n	%	n	%	n	%	n	%	n	%
Single Member Households	1,349	8.2	540	9.0	540	6.3	206	5.1	334	7.5
Unrelated Member Hhs	383	2.3	16	0.3	18	0.2	8	0.2	10	0.2
Nuclear Family Households	10,127	61.9	2,498	41.5	3,786	44.5	2,105	51.8	1,681	37.8
Extended Family Hhs	4,048	24.8	2,767	46.0	3,903	45.9	1,655	40.8	2,248	50.5
Other Related Member Hhs	447	2.7	194	3.2	264	3.1	87	2.1	177	4.0
Total Households	16,354	100.0	6,015	100.0	8,511	100.0	4,061	100.0	4,450	100.0

Source: Authors' Tabulation, Household Expenditure Survey 30% Microdata (DOSM, 2012; 2020)



Imagining Social Kinship Networks

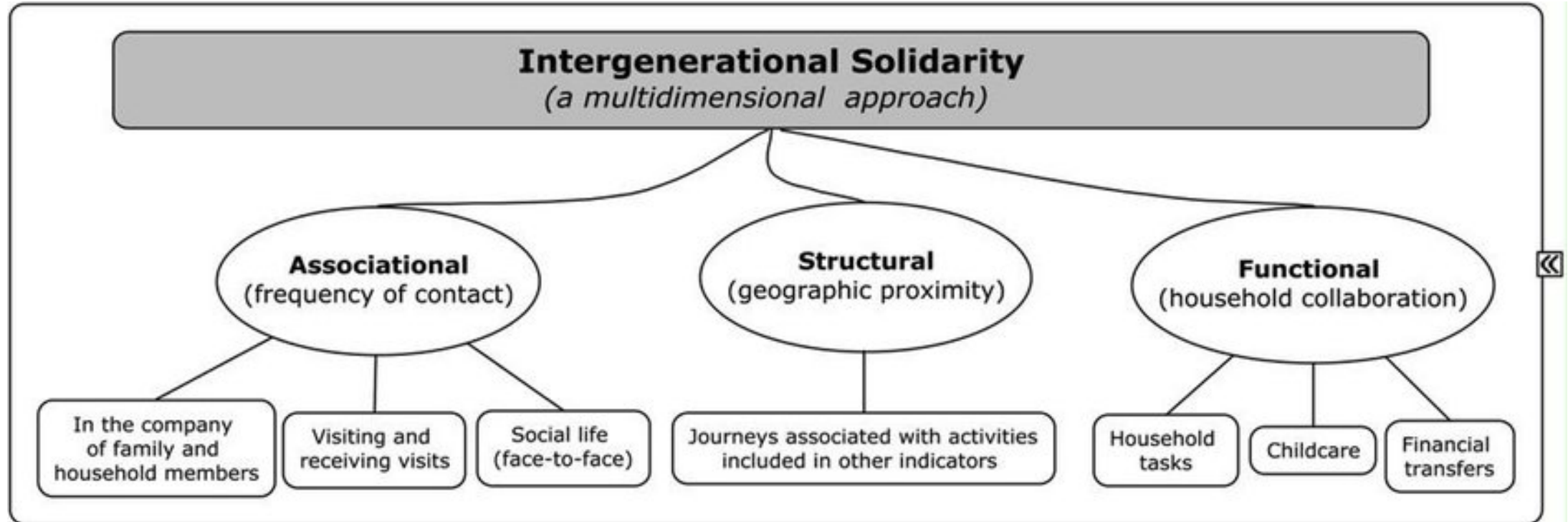


- When we imagine how our social networks look like, they may include friends and relatives and not just the immediate family members or those in the kinship network.
- Who is available or who is in close proximity might not necessarily translate into support, socio-emotionally or in tangible ways.

Social Network of Older Malaysians (60+), 2008, 2013 & 2014

LSNS-6	PSRPWB, 2008		TUA, 2013		MPFS-5, 2014	
	M	SD	M	SD	M	SD
Family: Considering the people to whom you are related by birth, marriage, adoption, etc.						
1. How many relatives do you see or hear from at least once a month?	2.64	1.753	3.04	1.613	2.93	1.424
2. How many relatives do you feel at ease with that you can talk about private matters?	1.52	1.578	1.50	1.508	2.04	1.472
3. How many relatives do you feel close to such that you could call on them for help?	1.39	1.547	1.65	1.604	1.96	1.470
Friendships: Considering all of your friends including those who live in your neighbourhood.						
4. How many of your friends do you see or hear from at least once a month?	3.53	1.668	4.08	1.414	3.02	1.714
5. How many friends do you feel at ease with that you can talk about private matters?	1.67	1.722	1.55	1.720	1.45	1.611
6. How many friends do you feel close to such that you could call on them for help?	1.52	1.675	1.81	1.742	1.42	1.586
Total N (Sample)	1,880		2,274		4,054	

Intergenerational Solidarity: A Visualisation



Source: Sánchez, J., López, T., & González, V. (2019)

- How do we operationalize and measure intergenerational solidarity?
- Culture-specific, i.e. practice of adult children giving money to aged parents

Sources of Income of Older Persons in Malaysia by Sex, 2017

Sources of Income	Total ₆₀₊			Male ₆₀₊			Female ₆₀₊		
	N	%	M (RM)	N	%	M (RM)	N	%	M (RM)
Salary / Wages	78	12.7	1,142.12	60	19.1	1,264.33	18	6.0	734.72
Business	60	9.8	1,720.83	38	12.1	1,936.84	22	7.4	1,347.73
Rental	16	2.6	934.38	11	3.5	1,050.00	5	1.7	680.00
Interest / Dividend	3	0.5	1,900.00	2	0.6	2,750.00	1	0.3	200.00
Welfare	76	12.4	309.01	36	11.5	306.53	40	13.4	311.25
Pension	109	17.8	1,406.20	80	25.5	1,421.45	29	9.7	1,364.14
Agriculture	65	10.6	679.85	41	13.1	871.46	24	8.1	352.50
Child(ren)	335	54.7	448.06	168	53.5	438.93	167	56.0	457.25
Other Sources	34	5.6	652.35	21	6.7	755.24	13	4.4	486.15
Personal Inc./mth	535	87.4	1,141.53	287	91.4	1,463.73	248	83.2	768.65
Household Inc./mth	560	91.5	2,449.42	294	93.6	2,680.98	266	89.3	2,193.48
Own House	437	71.4		260	82.8		177	59.4	
Own Land	322	52.6		188	59.9		134	45.0	

Source: Hamid, Wan Sulaiman, Bagat & Chai, 2022

Examples of Public and Private Transfers by Household Type, Malaysia, 2019

Transfers (RM, Annual)	Households without Older Persons		Households with Older Persons & Non-older Persons		Households with ONLY Older Persons		Total Households	
	%	M (RM)	%	M (RM)	%	M (RM)	%	M (RM)
<i>Examples of Private Transfers</i>								
Remittance Received	95.4	2,163.70	96.7	4,244.89	98.9	10,090.83	96.0	3,407.09
Transfers to Other Households	43.7	1,847.03	16.3	673.52	6.7	275.84	32.8	1,382.90
<i>Examples of Public Transfers</i>								
Social Welfare & Assistance Received	47.5	605.72	61.8	979.82	78.1	1,412.14	54.1	778.66
Income Tax & Zakat Paid	18.8	1,216.01	12.3	920.03	3.9	371.99	15.7	1,062.34

Conclusion

- **Percentage of households with at least one member aged 60 pr 65 years or older**
- **Living arrangements:**
 - OP living alone
 - OP living with spouse only
 - OP living with others
 - OP living with non-relatives only
- **Social network:**
 - No. of living sibling, children & grandchildren
 - LSNS-6
- **Measuring intergenerational solidarity**
 - Exchange of support / inter-household transfers



First consultation of ESCAP member States on the Asia-Pacific Fourth Review
and Appraisal of the Madrid International Plan of Action on Ageing:
process, survey, data and policies

6 and 7 May 2021, Bangkok, Thailand
(Virtual meeting)

Draft working paper

Statistical indicators relevant to ageing
and age-disaggregated data in Asia and the Pacific*

*Prepared by Jessica Gardner (jessica@stat2info.com), 22 November 2020

This paper has been issued without formal editing.



TERIMA KASIH/*THANK YOU*

www.upm.edu.my

BERILMU BERBAKTI
WITH KNOWLEDGE WE SERVE I