

PROGRESS OF THE WORLD'S WOMEN 2019–2020

FAMILIES IN A CHANGING WORLD





Why focus on families?





Equality in the family is a precondition for sustainable development

To achieve SDG 5 requires:

- elimination of violence and an end to harmful practices
- ensuring women's access to economic resources
- shared responsibility for unpaid care and domestic work

Other SDGs rely on gender equality in the family:

- SDG 3 - women have access to reproductive healthcare and family planning
- SDG 4 - girls are able to delay marriage and complete their schooling
- SDG 8 - family-friendly policies and workplace regulations are in place



Equality in the family can accelerate progress on the Beijing Platform for Action

Fragile progress (even more under threat now)

- 32 million girls are still not in school.
- 300,000 women die in childbirth each year.
- 3/4 of the world's parliamentarians are men.
- One in five women have experienced IPV in the past year.

All these outcomes often enabled or constrained by family relationships.





Families are diverse and, to be effective, policies need to take that into account

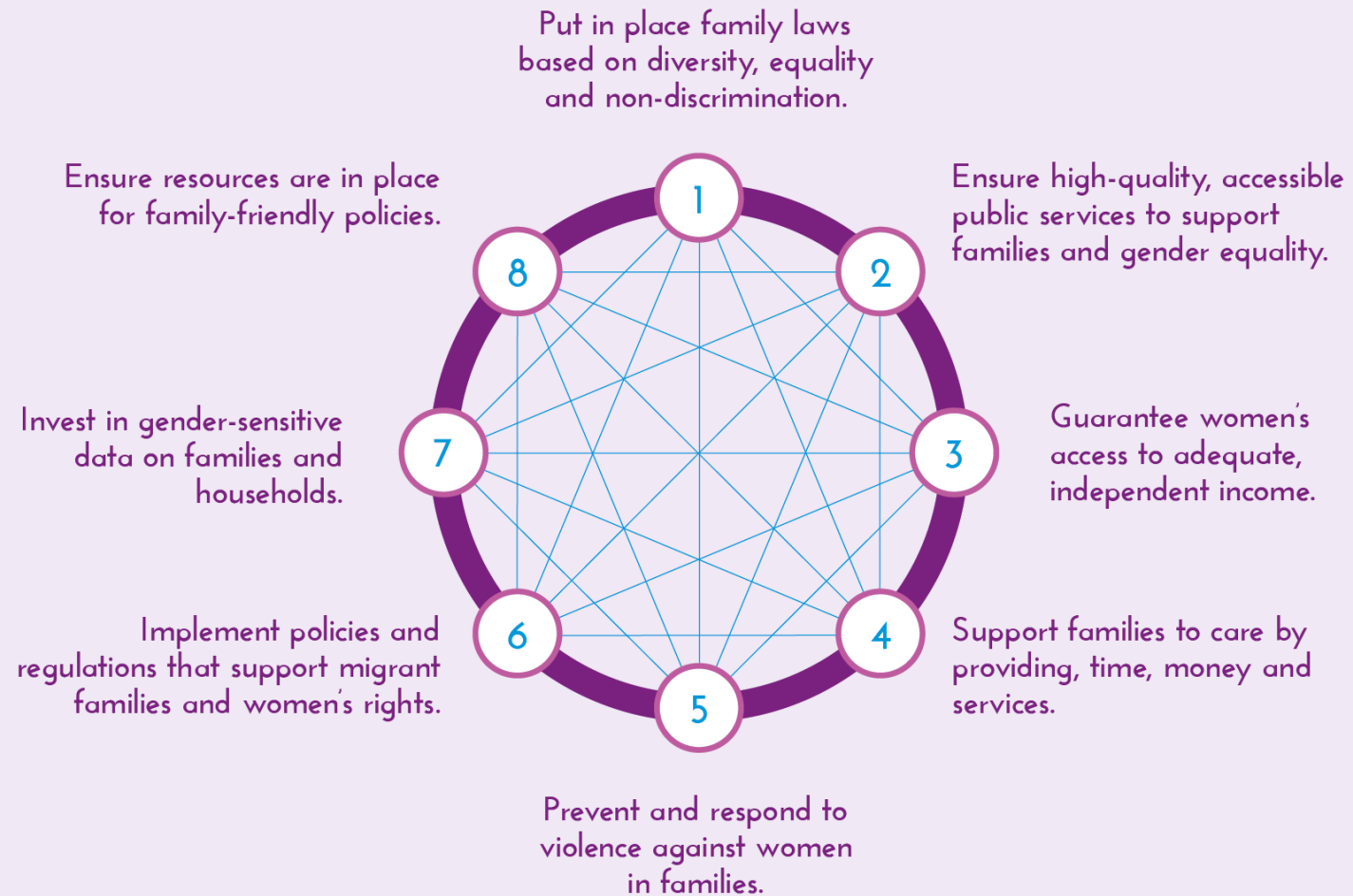
FIGURE 2 HOUSEHOLD TYPES: GLOBAL AND REGIONAL AVERAGES

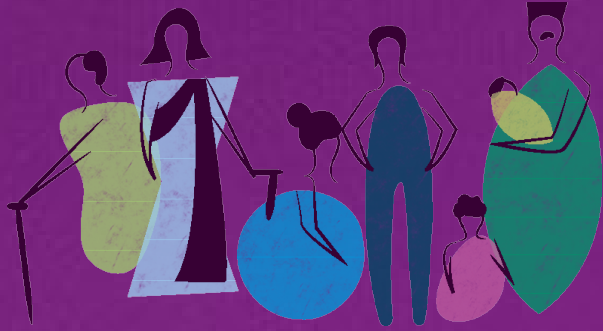
Globally, less than four in every ten households are formed by a couple living with children (of any age).



Source: Regional values calculated by UN Women using published country-level estimates from the UN DESA 2018a. For this analysis, data on China are based on estimates produced and published in Hu and Peng 2015.
 Note: Regional estimates marked with an asterisk (*) are based on less than two-thirds of their respective regional population and should be treated with caution: Europe and Northern America (41.0 per cent of the population) and Northern Africa and Western Asia (36.1 per cent of the population). Global and regional distributions of households by type may not total 100 due to rounding. Population coverage was insufficient for Oceania and therefore not shown.

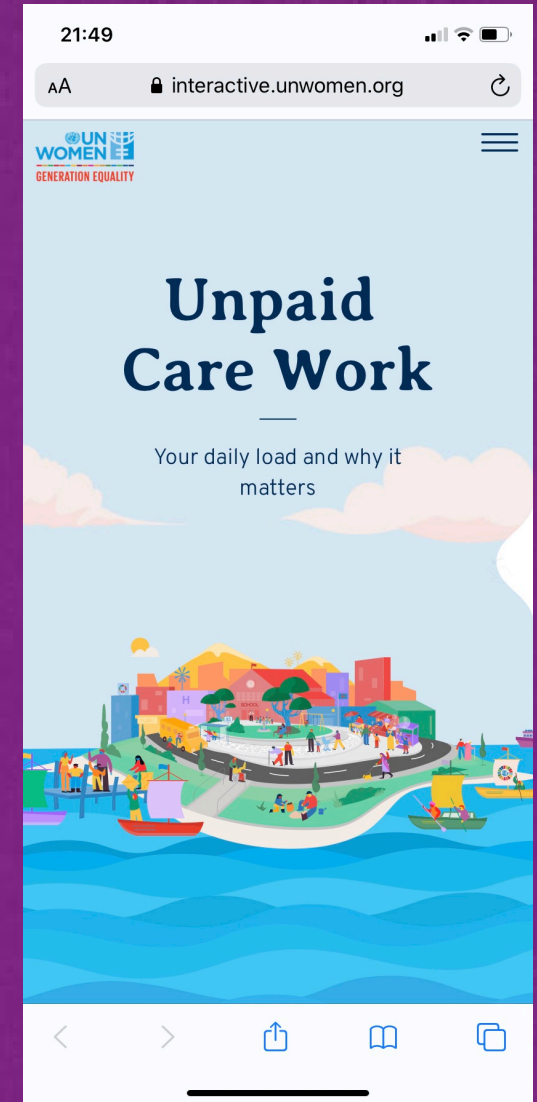
MOVING FORWARD: A FAMILY-FRIENDLY POLICY AGENDA





Unpaid care work: Your daily load and why it matters

interactive.unwomen.org
[#DayOfFamilies](https://twitter.com/DayOfFamilies)



THANK YOU



laura.turquet@unwomen.org

Policy Advisor
UN Women
@lauraturquet

#DayOfFamilies

progress.unwomen.org

