

Multi-Indicator Survey on Aging (MISA) Population in Malawi

Household Listing Training and Field Data
Collection Report: May 2017

Prepared by

National Statistical Office
Demography and Social Statistics Division
P.O. Box 333, Zomba, Malawi

NSO

12/06/2017

Table of Contents

1.0	Introduction	1
2.0	Household listing	2
2.1	Development of household listing Application and training.....	2
3.0	Recruitment and Training of enumerators.....	3
3.1	Field Deployment.....	3
4.0	Lessons Learnt.....	3
4.1	Conclusion	4
	List survey personnel	5
	Field Movement Plan according to Sample	6
	Mzimba District: team 1	6
	Mzimba District: Team 2	6
	Lilongwe Rural District: Team 3.....	7
	Lilongwe Rural District: Team 4.....	7
	Mangochi District: Team 5	8
	Mangochi District: Team 6	8
	Nsanje District: Team 7	9
	Nsanje District: Team 8	9
	Map of Mzimba showing sampled Enumeration Areas (EA)	10
	Map of Lilongwe showing sampled Enumeration Areas (EA)	11
	Map of Mangochi showing sampled Enumeration Areas (EA).....	12
	Map of Nsanje showing sampled Enumeration Areas (EA)	13

1.0 Introduction

Sub-Saharan Africa is currently experiencing rapid growth in the number of older persons in the population until at least 2050. The percentage of population aged 60 and above is projected to rise from 5.4 per cent in 2015 to 8.9 per cent in 2050 (United Nations, 2015), with a larger share of women (5.9 per cent in 2015 and 9.5 per cent in 2050) than men (5.0 per cent in 2015 and 8.3 per cent in 2050) to be found aged 60 and above. In absolute terms, this equates to a more than tripling of the number of older persons in Africa from 64 million in 2015 to 220 million in 2050, with a total of 29 million men and 35 million women in 2015 and 102 million men and 118 million women over 60 in 2030. As a result, African countries need to plan for a time in the not-too-distant future when their populations will be considerably older than they are today.

These demographic changes are occurring at the same time as other equally significant economic and social transformations are underway. Some of these challenges are multi-dimensional and cross-cutting and impact on older persons, males and females, in more than one way. Increasing levels of education and urbanization among the younger generations, together with rapid economic development, tend to go hand-in-hand with higher rates of rural-urban migration, changing patterns of labour force participation and other major social and behavioural changes.

At the same time, there is also a need to document the economic, social and cultural contributions older men and women make to their families and communities. Older persons can contribute to rural development and, in countries where rates of rural to urban migration are high, the proportion of smallholders aged 50 and over can increase. It is critical to also seek to improve the understanding of the gender dimensions of the lives of older persons, since social, economic, health and cultural factors affect older women and men in different ways.

UNDESA has launched a project with the objective to develop a standard methodology to produce, analyze and deliver a database of harmonized indicators on the situation of older persons in Africa. This objective is to be achieved through the development of a tool, based on the situation analysis of the three African countries and to be piloted in a single country to provide policymakers with a comprehensive picture of the situation of older persons, men and women, in their country. This survey instrument aims to assist countries in collecting and analyzing data on older persons in order to be able to more accurately monitor the changing situation of older persons during the implementation phase of the new post-2015 development agenda.

II. Objective

The main objective of this contract is to conduct a representative (selected sample survey on Ageing in Malawi using the survey methodology (questionnaires, manuals) prepared by UNDESA. The main objectives of the survey are:

1. To conduct a sample survey of older persons (persons aged 60 years and older) in Malawi;
2. To provide empirical evidence on ageing in the survey districts as a baseline for national policy planning, monitoring and implementation and reporting;
3. To provide feedback to further fine-tune the survey methodology (questionnaire & manuals).

2.0 Household listing

Before the data is collected, a complete count of households in all selected Clusters (enumeration areas) is needed to form the basis for sampling. A total of 160 clusters have been randomly selected and will be canvassed during the household listing period.

The listing exercise represents one of the most important bias correction procedures in the survey, especially when the sampling frame is out-of-date. It provides complete and recent information on the number of households for each selected cluster. Selecting the sample households from the updated listing will ensure that the MISA sample represents the current population of selected districts of Mzimba, Lilongwe rural, Mangochi and Nsanje.

The MIS standard recommends that the household listing be carried out by field staff other than interviewers as a separate field operation conducted in all clusters before the survey starts. Household listing as a separate exercise is more expensive but more reliable. The expense is incurred because each cluster must be visited twice, once during the household listing and then again during interviews. It is more reliable because staff that are specifically trained and devoted to listing are less likely to bias the sample by excluding households that are harder to reach. Also, with a separate listing the random selection of households will be done from lists in a single central office using reliable and uniform procedures.

2.1 Development of household listing Application and training

A training presentation for household listing was developed to provide general guidelines for carrying out the household listing operation in the field along with the responsibilities of the listing staff, and the definition of terms used. It also describes the selection of households to be included in the MISA survey. Household listing for MISA has not used paper forms. It has used Computer Assisted Personal Interview application. The CAPI application has been developed by UNDESA in collaboration with National Statistical Office.

3.0 Recruitment and Training of enumerators

Forty (40) field personnel were recruited and trained in household listing and use of CAPI application. Eight team leaders were permanent staff of NSO who were responsible for team logistics and welfare in the field.

Training of team leaders and household listers was conducted at Chilema Ecumenical Training Centre in Machinga for 2 days starting from April 29 to 30 and a day on CAPI training on Wednesday 3 May 2017 at NSO Demography Division. This was the case as the CAPI application was not ready during the two days of training at Chilema.

3.1 Field Deployment

Field deployment followed immediately after the CAPI training on 3rd May 2017. Eight teams were formed, two teams in each of the selected districts. Household listing actually started on 4th May 2017 with two teams which were deployed in the Northern Region of Malawi, i.e., Mzimba District, started work on 5th May 2017. Each team had 6 members, one team leader, 4 household listers and a driver. The field work was estimated to last within the period of 25 days including Saturday and Sundays. Teams were given two days off and 2 days of travel and one day of meeting with local authorities.

Team leaders were given an introductory letter to the District Commissioner and the Police informing them about the objective of the survey and that the household listing teams will be working in their districts for the stated period and assist them when need arises. Each team member had his/her own letter of introduction appealing to the Government and general public to be of assistance to the NSO listing teams whenever necessary.

4.0 Lessons Learnt

Field work for household listing went according to plan. The listing was done using the CAPI and most of listing staff ever used CAPI application in one or the other surveys either conducted by NSO or other research institutions. It was very easy to training enumerator on using CAPI.

Team had no problems meeting with local authorities. They were cooperative and helpful, although some Traditional Authorities (TA) needed a stamped introductory letter written by the office stamped by the District Commissioner to make sure that the teams had gone through the District Commissioner.

Some Traditional Authorities complained of the tendency of teams seeking consent from the TA before commencement of work but do not go back for formal exit courtesy.

Locating selected clusters was not a problem. The major challenge was accessibility of some of the clusters. Two teams had to hire boats to cross the river and the one to reach a cluster which was along the lake shores of lake Malawi and cannot be accessed from the land as it is surrounded by hills.

During the first two days of household listing, work progress was very slow enumerators were getting familiarization with the CAPI application, getting understanding with household listing environment and rapport.

During the household listing exercise some tablets were unable to pick GPS points. Thanks to the application as it was made that in such extreme situation, the enumerator could proceed with interview by press cancel button.

Field movement plan was developed which assisted teams to move from one cluster to another. Field movement plan is where clusters are arranged in such a way that teams should move according to a predetermined plan from one cluster to another cluster which is close by. The aim is to reduce number of KM travelled per day, easy field supervision and reducing the problems of locating clusters.

Members felt that there is need to have a CAPI manual during training. This was not possible as the developer of the household listing CAPI has very limited time to deliver the application.

4.1 Conclusion

Field work for household listing went according to plan. The listing was done using the CAPI which reduced time for data entry of listing forms at the office and speeded up selection of household to be sampled.

List survey personnel

MULTI-INDICATOR SURVEY ON AGING POPULATION IN MALAWI 2017- FIELD PERSONNEL

NO	PERSON NAME	SEX	CONTACTS	LOCATION
01	MERCY NGWIRA	F	0888 131 144 / 0999 218 644	MZIMBA
02	DOROTHY NALIYA	F	0999344666/0884573724	
03	JOSEPH MALIZANI	M	0999 166 454 / 0884 839770	
04	FRANCIS SAKA	M	0888 860 817	
05	FISKANI KONDOWE	M	0881 176 840	
06	CHRITINA KAMANGA	F	0888 933 969 / 0999 939 889	MZIMBA
07	CHISOMO MKWAPATIRA	F	0888 764 690	
08	STANLEY NYIRENDA	M	0882 809 602	
09	MCFENTON MWALE	M	0884 911 838	
10	STEVIE CHAVI	M	0881 223 486	
11	D. MCHOMBO	M	0995 523 106/0881557377	LILONGWE
12	STEVEN MALUPIYA	M	0882980575/0997024755	
13	MARY MAGOYA	F	0884 968 585 / 0999 570 615	
14	GRANT MAKATA	M	0995 377 782	
15	EDWARD KACHIKHOKHOMBE	M	0999 774 140	
16	RICHARD KANSICHI	M	0881 958 436	LILONGWE
17	ANDREW CHIPIRILO KUNTEMBWE	M	0999 786 556	
18	BLESSINGS CHITSULO	M	0885 014 061	
19	ISSAC MASAMBA TAYANI	M	0888 345 429 / 0996 260 747	
20	JOSEPH MASAME	M	0995 916 263	
21	ZIONE ZAMAERE	F	0995 830 008 / 0881 038 011	MANGOCHI
22	GRACE NAKUKHU CHIPILI	F	0882 543 291 / 0999 648 656	
23	STEVEN KADANGO	M	0999 942 630	
24	LEORNARD MANYUNGWA	M	0884 393 949	
25	KUMBUKANI NDALAMA	M	0888 427 486	
26	GETRUDE TAUZI	F	0998 170 800 / 0884 542 313	MANGOCHI
27	MOREEN MOSES	F	0995 351 643	
28	VICTOR MATOGA	M	0884 632 342	
29	SHEPERD FOSTER	M	0888 138 741 / 0992 604 730	
30	FRANCIS J. MANYAMBA	M	0884 847 078	
31	EVANCE KADONGOLA	M	0995 264 506	NSANJE
32	THOKOZANI C. PHIRI	F	0999 056 044	
33	VERONICA JALI	F	0999 308 183	
34	SEBASTIANO MKANDAWIRE	M	0995 933 608	
35	PRINCE MBOKOLA	M	0995 830 008	
36	NGINA MUNYENYEMBE	F	0997 937 833	NSANJE
37	NAOMI KAZEMBE	F	0882 721 478	
38	STANLEY MATEWERE	M	0995 325 613	
39	ENOCK MAMBA	M	0881 981 509	
40	SAMU KUPATSA	M	0888 157 726	

Field Movement Plan according to Sample

Mzimba District: team 1

Day	Team	Cluster	DISTRICT_NAME	TA_NAME	TA_CODE	EA	GEOCODE
1	Team 1	019	Mzimba	S/c Jaravikuba Munthali	04	002	10504002
2	Team 1	008	Mzimba	TA Mtwalo	02	009	10502009
3	Team 1	009	Mzimba	TA Mtwalo	02	021	10502021
4	Team 1	010	Mzimba	TA Mtwalo	02	035	10502035
5	Team 1	012	Mzimba	TA Mtwalo	02	061	10502061
6	Team 1	014	Mzimba	TA Mtwalo	02	087	10502087
7	Team 1	011	Mzimba	TA Mtwalo	02	047	10502047
8	Team 1	036	Mzimba	TA Mpherembe	09	003	10509003
9	Team 1	013	Mzimba	TA Mtwalo	02	075	10502075
10	Team 1	015	Mzimba	TA Mtwalo	02	097	10502097
11	Team 1	024	Mzimba	TA Chindi	05	117	10505117
12	Team 1	037	Mzimba	TA Mpherembe	09	023	10509023
13	Team 1	020	Mzimba	TA Chindi	05	008	10505008
14	Team 1	021	Mzimba	TA Chindi	05	037	10505037
15	Team 1	022	Mzimba	TA Chindi	05	066	10505066
16	Team 1	023	Mzimba	TA Chindi	05	089	10505089
17	Team 1	025	Mzimba	TA Chindi	05	148	10505148
18	Team 1	026	Mzimba	TA Chindi	05	175	10505175
19	Team 1	016	Mzimba	S/C Kapingo Sibande	03	006	10503006
20	Team 1	017	Mzimba	S/C Kapingo Sibande	03	032	10503032

Mzimba District: Team 2

Day	Team	Cluster	DISTRICT_NAME	TA_NAME	TA_CODE	EA	GEOCODE
1	Team 2	018	Mzimba	S/C Kapingo Sibande	03	070	10503070
2	Team 2	002	Mzimba	TA M'mbelwa	01	026	10501026
3	Team 2	027	Mzimba	TA Chindi	05	213	10505213
4	Team 2	001	Mzimba	TA M'mbelwa	01	001	10501001
5	Team 2	003	Mzimba	TA M'mbelwa	01	053	10501053
6	Team 2	004	Mzimba	TA M'mbelwa	01	076	10501076
7	Team 2	005	Mzimba	TA M'mbelwa	01	097	10501097
8	Team 2	038	Mzimba	TA Mzukuzuku	10	001	10510001
9	Team 2	006	Mzimba	TA M'mbelwa	01	123	10501123
10	Team 2	040	Mzimba	TA Mzukuzuku	10	801	10510801
11	Team 2	007	Mzimba	TA M'mbelwa	01	143	10501143
12	Team 2	039	Mzimba	TA Mzukuzuku	10	012	10510012
13	Team 2	028	Mzimba	TA Mzikubola	06	013	10506013
14	Team 2	029	Mzimba	TA Mzikubola	06	027	10506027
15	Team 2	030	Mzimba	TA Mzikubola	06	047	10506047
16	Team 2	031	Mzimba	TA Mabalabo	07	002	10507002
17	Team 2	032	Mzimba	TA Mabalabo	07	018	10507018
18	Team 2	035	Mzimba	SC Khosolo Gwaza Jere	08	018	10508018
19	Team 2	033	Mzimba	TA Mabalabo	07	035	10507035
20	Team 2	034	Mzimba	TA Mabalabo	07	050	10507050

Lilongwe Rural District: Team 3

Day	Team	Cluster	DISTRICT_NAME	TA_NAME	TA_CODE	EA	GEOCODE
1	Team 3	075	Lilongwe	TA Chimutu	07	001	20607001
2	Team 3	076	Lilongwe	TA Chimutu	07	029	20607029
3	Team 3	077	Lilongwe	TA Chimutu	07	055	20607055
4	Team 3	078	Lilongwe	TA Chimutu	07	801	20607801
5	Team 3	041	Lilongwe	STA Tsabango	11	008	20611008
6	Team 3	052	Lilongwe	TA Chadza	01	024	20601024
7	Team 3	046	Lilongwe	TA Malili	14	087	20614087
8	Team 3	042	Lilongwe	TA Kalumba	12	009	20612009
9	Team 3	053	Lilongwe	TA Chadza	01	056	20601056
10	Team 3	064	Lilongwe	TA Chiseka	03	114	20603114
11	Team 3	067	Lilongwe	TA Chiseka	03	806	20603806
12	Team 3	054	Lilongwe	TA Chadza	01	085	20601085
13	Team 3	066	Lilongwe	TA Chiseka	03	160	20603160
14	Team 3	051	Lilongwe	TA Kalumbu	10	041	20610041
15	Team 3	050	Lilongwe	TA Kalumbu	10	012	20610012
16	Team 3	070	Lilongwe	TA Mazengera	04	107	20604107
17	Team 3	068	Lilongwe	TA Mazengera	04	041	20604041
18	Team 3	069	Lilongwe	TA Mazengera	04	074	20604074
19	Team 3	071	Lilongwe	STA Chitekwele	05	020	20605020
20	Team 3	072	Lilongwe	STA Chitekwele	05	057	20605057

Lilongwe Rural District: Team 4

Day	Team	Cluster	DISTRICT_NAME	TA_NAME	TA_CODE	EA	GEOCODE
1	Team 4	073	Lilongwe	TA Khongoni	06	029	20606029
2	Team 4	074	Lilongwe	TA Khongoni	06	061	20606061
3	Team 4	047	Lilongwe	TA Kabudula	15	031	20615031
4	Team 4	048	Lilongwe	TA Kabudula	15	056	20615056
5	Team 4	049	Lilongwe	TA Kabudula	15	092	20615092
6	Team 4	080	Lilongwe	STA Mtema	09	026	20609026
7	Team 4	079	Lilongwe	TA Chitukula	08	026	20608026
8	Team 4	043	Lilongwe	STA Njewa	13	024	20613024
9	Team 4	044	Lilongwe	TA Malili	14	026	20614026
10	Team 4	056	Lilongwe	TA Kalolo	02	021	20602021
11	Team 4	057	Lilongwe	TA Kalolo	02	042	20602042
12	Team 4	058	Lilongwe	TA Kalolo	02	061	20602061
13	Team 4	059	Lilongwe	TA Kalolo	02	081	20602081
14	Team 4	060	Lilongwe	TA Chiseka	03	016	20603016
15	Team 4	045	Lilongwe	TA Malili	14	056	20614056
16	Team 4	061	Lilongwe	TA Chiseka	03	047	20603047
17	Team 4	065	Lilongwe	TA Chiseka	03	135	20603135
18	Team 4	062	Lilongwe	TA Chiseka	03	070	20603070
19	Team 4	063	Lilongwe	TA Chiseka	03	091	20603091
20	Team 4	055	Lilongwe	TA Chadza	01	116	20601116

Mangochi District: Team 5

Day	Team	Cluster	DISTRICT_NAME	TA_NAME	TA_CODE	EA	GEOCODE
1	Team 5	092	Mangochi	TA Nankumba	03	006	30103006
2	Team 5	120	Mangochi	Monkey Bay Urban	21	802	30121802
3	Team 5	093	Mangochi	TA Nankumba	03	025	30103025
4	Team 5	094	Mangochi	TA Nankumba	03	040	30103040
5	Team 5	095	Mangochi	TA Nankumba	03	056	30103056
6	Team 5	096	Mangochi	TA Nankumba	03	070	30103070
7	Team 5	081	Mangochi	TA Mponda	01	011	30101011
8	Team 5	086	Mangochi	TA Mponda	01	807	30101807
9	Team 5	084	Mangochi	TA Mponda	01	060	30101060
10	Team 5	085	Mangochi	TA Mponda	01	077	30101077
11	Team 5	082	Mangochi	TA Mponda	01	027	30101027
12	Team 5	119	Mangochi	Mangochi Township	20	701	30120701
13	Team 5	088	Mangochi	TA Chimwala	02	032	30102032
14	Team 5	090	Mangochi	TA Chimwala	02	066	30102066
15	Team 5	089	Mangochi	TA Chimwala	02	048	30102048
16	Team 5	091	Mangochi	TA Chimwala	02	083	30102083
17	Team 5	087	Mangochi	TA Chimwala	02	018	30102018
18	Team 5	106	Mangochi	TA Chowe	06	011	30106011
19	Team 5	083	Mangochi	TA Mponda	01	044	30101044
20	Team 5	107	Mangochi	TA Chowe	06	027	30106027

Mangochi District: Team 6

Day	Team	Cluster	DISTRICT_NAME	TA_NAME	TA_CODE	EA	GEOCODE
1	Team 6	114	Mangochi	TA Makanjila	08	006	30108006
2	Team 6	115	Mangochi	TA Makanjila	08	019	30108019
3	Team 6	116	Mangochi	TA Makanjila	08	031	30108031
4	Team 6	117	Mangochi	TA Makanjila	08	043	30108043
5	Team 6	118	Mangochi	STA Namabvi	09	009	30109009
6	Team 6	111	Mangochi	TA Katuli	07	010	30107010
7	Team 6	112	Mangochi	TA Katuli	07	025	30107025
8	Team 6	113	Mangochi	TA Katuli	07	039	30107039
9	Team 6	098	Mangochi	TA Jalasi	04	023	30104023
10	Team 6	097	Mangochi	TA Jalasi	04	009	30104009
11	Team 6	099	Mangochi	TA Jalasi	04	035	30104035
12	Team 6	100	Mangochi	TA Jalasi	04	046	30104046
13	Team 6	101	Mangochi	TA Mbwana Nyambi	05	004	30105004
14	Team 6	102	Mangochi	TA Mbwana Nyambi	05	017	30105017
15	Team 6	103	Mangochi	TA Mbwana Nyambi	05	032	30105032
16	Team 6	104	Mangochi	TA Mbwana Nyambi	05	044	30105044
17	Team 6	105	Mangochi	TA Mbwana Nyambi	05	059	30105059
18	Team 6	110	Mangochi	TA Chowe	06	075	30106075
19	Team 6	108	Mangochi	TA Chowe	06	043	30106043
20	Team 6	109	Mangochi	TA Chowe	06	058	30106058

Nsanje District: Team 7

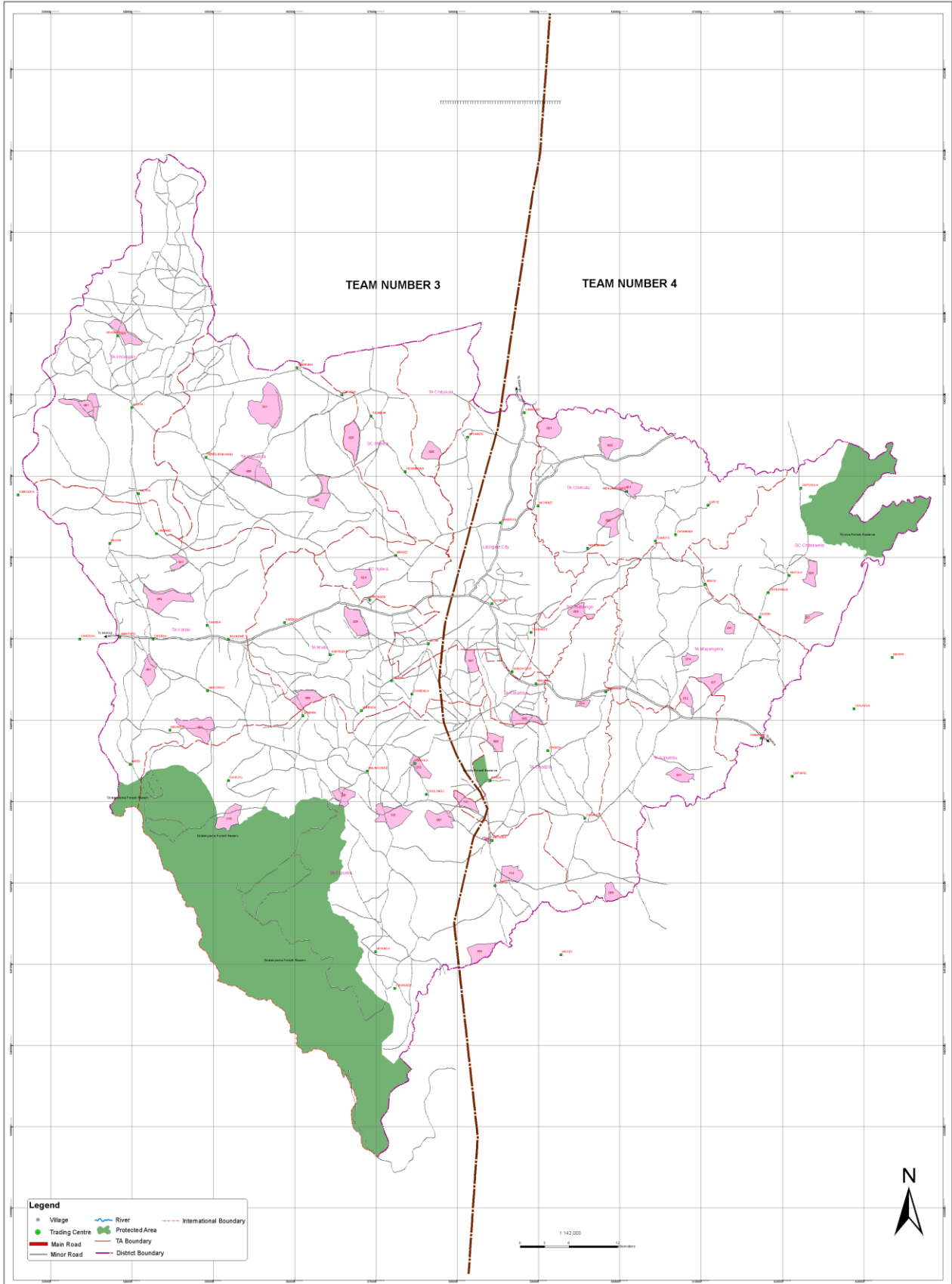
Day	Team	Cluster	DISTRICT_NAME	TA_NAME	TA_CODE	EA	GEOCODE
1	Team 7	121	Nsanje	TA Ndamera	01	005	31101005
2	Team 7	122	Nsanje	TA Ndamera	01	011	31101011
3	Team 7	123	Nsanje	TA Ndamera	01	017	31101017
4	Team 7	124	Nsanje	TA Ndamera	01	024	31101024
5	Team 7	126	Nsanje	TA Chimombo	02	006	31102006
6	Team 7	127	Nsanje	TA Chimombo	02	012	31102012
7	Team 7	125	Nsanje	TA Chimombo	02	001	31102001
8	Team 7	155	Nsanje	TA Ngabu	08	006	31108006
9	Team 7	156	Nsanje	TA Ngabu	08	011	31108011
10	Team 7	157	Nsanje	STA Makoko	09	004	31109004
11	Team 7	153	Nsanje	TA Malemia	07	010	31107010
12	Team 7	160	Nsanje	Nsanje Boma	20	713	31120713
13	Team 7	159	Nsanje	Nsanje Boma	20	708	31120708
14	Team 7	158	Nsanje	Nsanje Boma	20	702	31120702
15	Team 7	152	Nsanje	TA Malemia	07	005	31107005
16	Team 7	154	Nsanje	TA Malemia	07	017	31107017
17	Team 7	143	Nsanje	TA Tengani	05	026	31105026
18	Team 7	144	Nsanje	TA Tengani	05	032	31105032
19	Team 7	141	Nsanje	TA Tengani	05	016	31105016
20	Team 7	142	Nsanje	TA Tengani	05	021	31105021

Nsanje District: Team 8

Day	Team	Cluster	DISTRICT_NAME	TA_NAME	TA_CODE	EA	GEOCODE
1	Team 8	139	Nsanje	TA Tengani	05	005	31105005
2	Team 8	140	Nsanje	TA Tengani	05	011	31105011
3	Team 8	148	Nsanje	TA Mbenje	06	024	31106024
4	Team 8	149	Nsanje	TA Mbenje	06	029	31106029
5	Team 8	150	Nsanje	TA Mbenje	06	806	31106806
6	Team 8	151	Nsanje	TA Mbenje	06	813	31106813
7	Team 8	146	Nsanje	TA Mbenje	06	011	31106011
8	Team 8	147	Nsanje	TA Mbenje	06	017	31106017
9	Team 8	145	Nsanje	TA Mbenje	06	005	31106005
10	Team 8	137	Nsanje	TA Mlolo	04	057	31104057
11	Team 8	138	Nsanje	TA Mlolo	04	805	31104805
12	Team 8	136	Nsanje	TA Mlolo	04	050	31104050
13	Team 8	134	Nsanje	TA Mlolo	04	036	31104036
14	Team 8	135	Nsanje	TA Mlolo	04	043	31104043
15	Team 8	132	Nsanje	TA Mlolo	04	022	31104022
16	Team 8	133	Nsanje	TA Mlolo	04	029	31104029
17	Team 8	130	Nsanje	TA Mlolo	04	012	31104012
18	Team 8	131	Nsanje	TA Mlolo	04	017	31104017
19	Team 8	128	Nsanje	TA Mlolo	04	002	31104002
20	Team 8	129	Nsanje	TA Mlolo	04	006	31104006

Map of Lilongwe showing sampled Enumeration Areas (EA)

LILONGWE DISTRICT AGING SURVEY SAMLED EA'S



Map of Mangochi showing sampled Enumeration Areas (EA)

